

Land Management & Rural Economic Development (LM-RED)

Land Tenure Security



January 2014



Model for systematic land registration (SLR)

Main Output:

An efficient Model for systematic Land Registration (SLR) is approved

Selected Activities:

- * Design & test SLR Model based on practical land registration activities in LNT
- * Training in survey technology, GIS, data base management, CSLT, PLUP
- * Develop/adjust guidelines/manuals on SLR, survey equipment & software



Major Steps

- 1. Training of Staff**
- 2. Information & Mobilization of Villagers**
 - Village Authority Training
 - Information on Systematic Land Titling
 - Boundary marking by plot owners
- 3. Survey & Adjudication at village level**
Residential Plots & Permanent Agric. Plots
Community Land & State Land)
- 4. Cadastral Data Management**
 - Data Entry into LaoLandReg Data Base
- 5. Confirmation of Land Use Rights**
- 6. Public Display (30 days)**
- 7. Signing & Distribution of Land Title**



8 days

105 days



Surveying Equipment

- ❖ **GNSS StarFire receiver with Digital Plane Table (DPT) (130 mio. LAK/unit)**
 - Suitable combination of accuracy (± 10 cm) and productivity
 - On site digital cadastral mapping with real time positional correction
 - Easy to handled for non-professional surveyors
 - Very high productivity (up to 40 parcels/day) if used at full capacity

- ❖ **Total Station (54 mio LAK/unit)**
 - Can be used in areas without satellite signal (trees, urban zones);



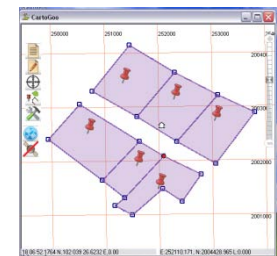
GNSS StarFire

+



Field Computer

+



GIS 360 DPT



Why Communal Land Titling?

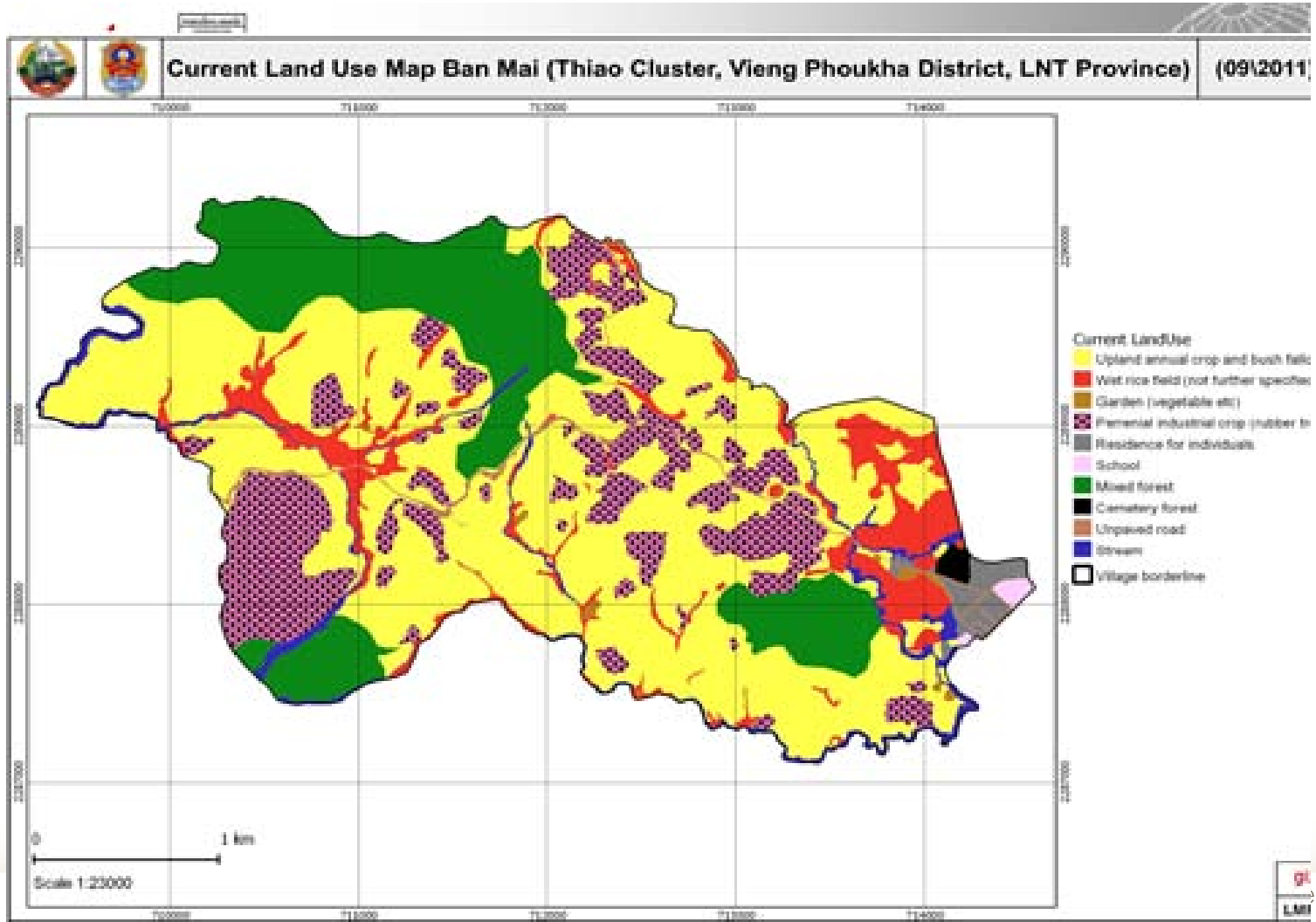
... to improve tenure security and to strengthen the management authority of communities.

Because

- * Certain areas do not allow “individual” or “state land” registration, therefore only registration as “communal land” can assure land tenure security.
- * CLT is a direct contribution to food security and poverty eradication (300,000 Families derive their livelihoods directly from forests)
- * Communities ensure sustainable use of land as well as protection of land and natural resources.
- * Communal land is important for the social, cultural and spiritual life of communities.



German contribution to Land Titling Project (WB, AusAID); LPDP 2005-2008, LMRP 2009 – 2011, Actual: LM-RED 2012-2014





LMRED Communal Land Titling

Achievements in CLT Vieng Phoukha as part of SyLRT

Workflow Steps	Communal Land			
	Plantation	Built Up	Forest	Permanent Agriculture
Survey	14	20	1	2
Adjudication	0	20	0	2
Data Entry	0	1	0	2
Conclusion	0	1	0	2
Public Display	0	1	0	2
Title Printing	0	1	0	2
Title Distribution	0	1	0	2



Future tasks.....

- Initiate wide spread campaigns for awareness raising amongst population
- Support financial concept for country wide Systematic Land Registration (→ FA)
- Expand Communal Land Titling and test/identify specific procedures and tools
- Foster access to and institutionalization of data for land and NR (e.g. Land Concession Inventory)
- others. ...



Thank you