

ព្រះរាជាណាចក្រកម្ពុជា
KINGDOM OF CAMBODIA
ជាតិ សាសនា ព្រះមហាក្សត្រ
NATION RELIGION KING



ធនាគារជាតិ នៃ កម្ពុជា
NATIONAL BANK OF CAMBODIA

ព័ត៌មានស្ថិតិសេដ្ឋកិច្ច និងរូបិយវត្ថុ
ECONOMIC AND MONETARY STATISTICS

លេខ ៣៤៧- ឆ្នាំទី៣០
ខែកញ្ញា ឆ្នាំ២០២២
SERIES No. 347-30th YEAR
SEPTEMBER 2022

Contents

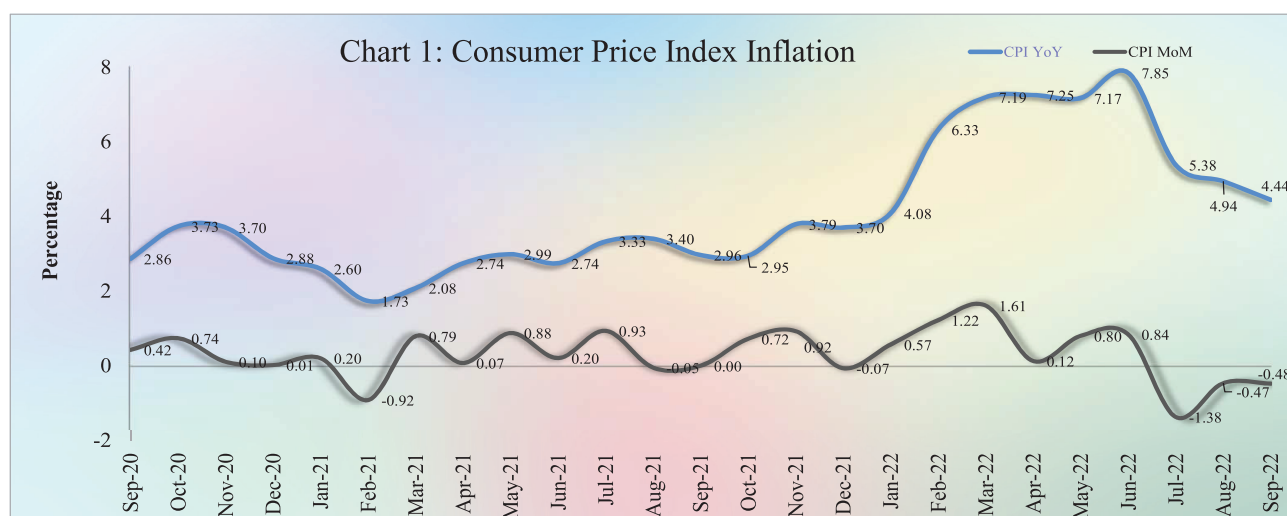
	Page
- Introduction	1
- Exchange Rate.....	1
- Money Supply	1
- Net Domestic Assets of the Depository Corporations.....	2
- Net Foreign Assets of the Depository Corporations.....	2
- Other Depository Corporations Survey	3
- Other Financial Corporations Survey	3
- Interest Rates on Loans and Deposits	3
- Foreign Tourist Arrivals.....	4
- International Trade in Goods	4
Table 1 : Consumer Price Index and Inflation Rate	6
Table 2 : Consumer Items Showing Price Decreased in September 2022.....	7
Table 3 : Gross Domestic Product.....	8
Chart 1 : GDP by Economic Activity (At Constant 2000 Prices).....	8
Chart 2 : GDP by Economic Activity (At Current Prices).....	8
Table 4 : Residential Property Price Index	9
Chart 3 : RPPI Month on Month Change	9
Chart 4 : RPPI Year on Year Change.....	9
Table 5 : Approved Investment Projects by Sectors	10
Chart 5 : Investment Fixed Assets by Sectors.....	10
Chart 6 : Numbers of Investment Projects by Sectors	10
Table 6 : Approved Investment Projects by Major Countries.....	11
Table 7 : Daily Exchange Rate in September 2022 (KHR/USD).....	12
Table 8 : Monthly Exchange Rate (KHR/USD, End-Period)	13
Chart 7 : Trend of Monthly Exchange Rate	13
Table 9 : The Value of KHR Against Other Currencies (Official Buying Rates, End-Period).....	14
Table 10: Deposit Money Bank's Interest Rates on Deposits and Loans in KHR	15
Table 11: Central Bank Survey.....	16
Table 12: Other Depository Corporations Survey.....	17
Table 13: Depository Corporations Survey	18
Table 14: Other Financial Corporations Survey.....	19
Table 15: Financial Corporations Survey.....	20
Chart 8 : Financial Corporations Survey.....	21
Chart 9 : Monetary Aggregates Components.....	21
Table 16: Credit Granted by Deposit Money Banks Classified by Industry	22
Chart 10: Credit Granted by Deposit Money Banks Classified by Industry	22
Table 17: Monthly Change of Credit Granted by Deposit Money Banks Classified by Industry.....	23
Table 18: Deposits with Deposit Money Banks	24
Chart 11: Deposits with Deposit Money Banks Classified by Currency, as of September 2022 (% of Total Deposits).....	24
Table 19: Monthly Change of Deposits with Deposit Money Banks	25
Chart 12: Deposits in KHR Classified by Type, as of September 2022 (% of Total KHR Deposits)	26
Chart 13: Deposits in Foreign Currency Classified by Type, as of September 2022 (% of Total FCD).....	26
Table 20: Credit Granted by Micro-Finance Institutions and Non-Government Organizations	27
Table 21: KHR-Denominated Checks Clearing Through Clearing House.....	28
Table 22: USD-Denominated Checks Clearing Through Clearing House	29
Table 23: Visitor Arrivals in Cambodia	30
Table 24: Cambodia's Imports and Exports.....	31
Table 25: The Banking System in Cambodia.....	32-33

Introduction

Headline consumer price inflation in September 2022 decelerated over the previous month, while the Khmer riel (KHR) continued to depreciate against US dollar. During this period, banking transaction, reflected by credit to private sector and resident's deposit, continued to increase. In the meantime, international trade in goods showed a decrease in deficit.

Consumer Price Index

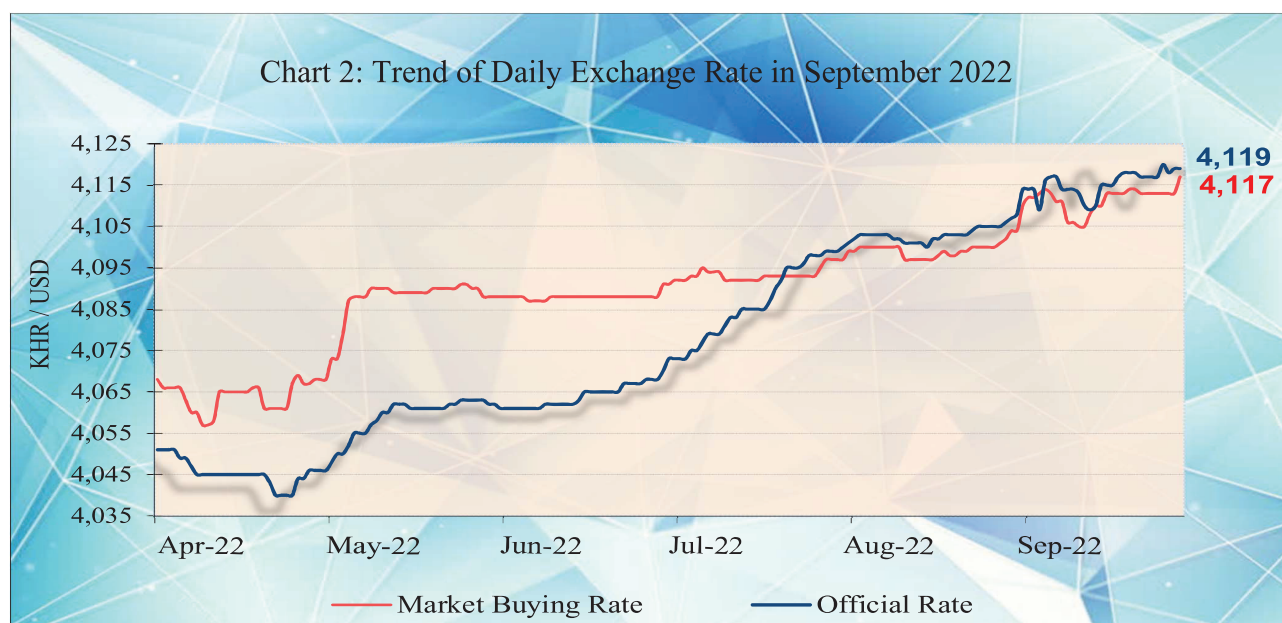
The consumer price inflation in Phnom Penh (month-on-month) continued to decelerate to a negative level of -0.48% in September 2022 from -0.47% in August, in which seven out of twelve group indexes decreased; while two group indexes increased, and another three group indexes remained stable.



During the same period, the year-on-year percentage change of the CPI for all items eased to 4.4% in September 2022 from 4.9% in August, which was mainly due to the lower hike in oil price.

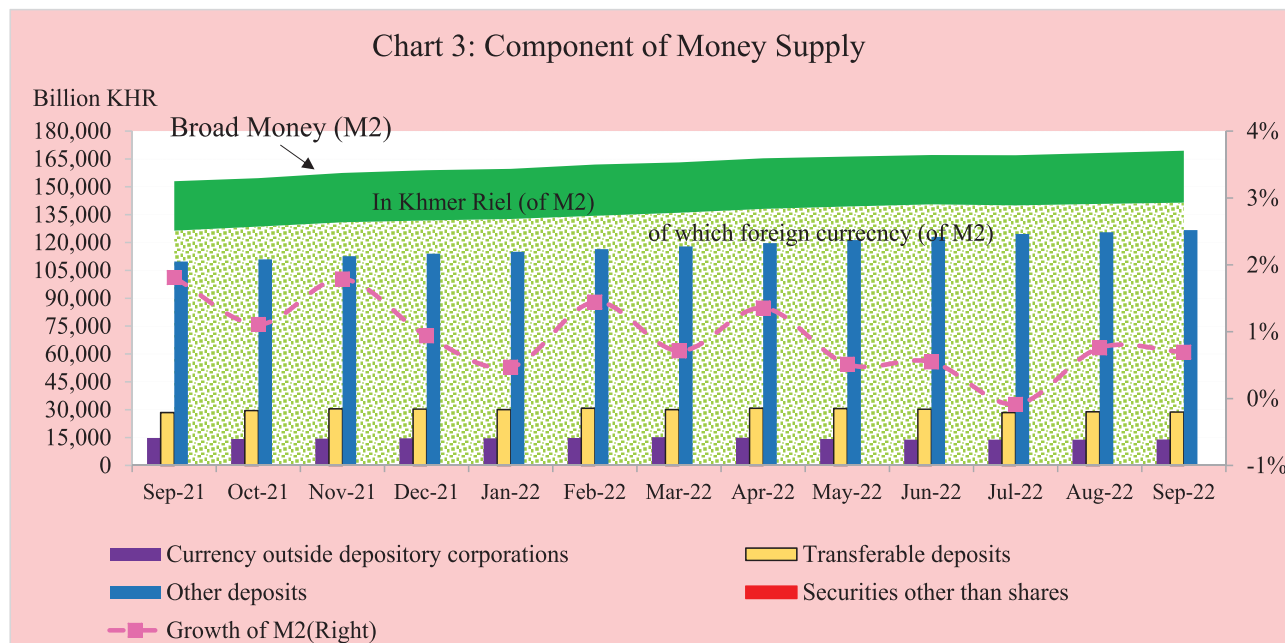
Exchange Rate

The exchange rate (market buying rate) was KHR 4,117 per USD in September 2022, depreciated by 0.32% over August.



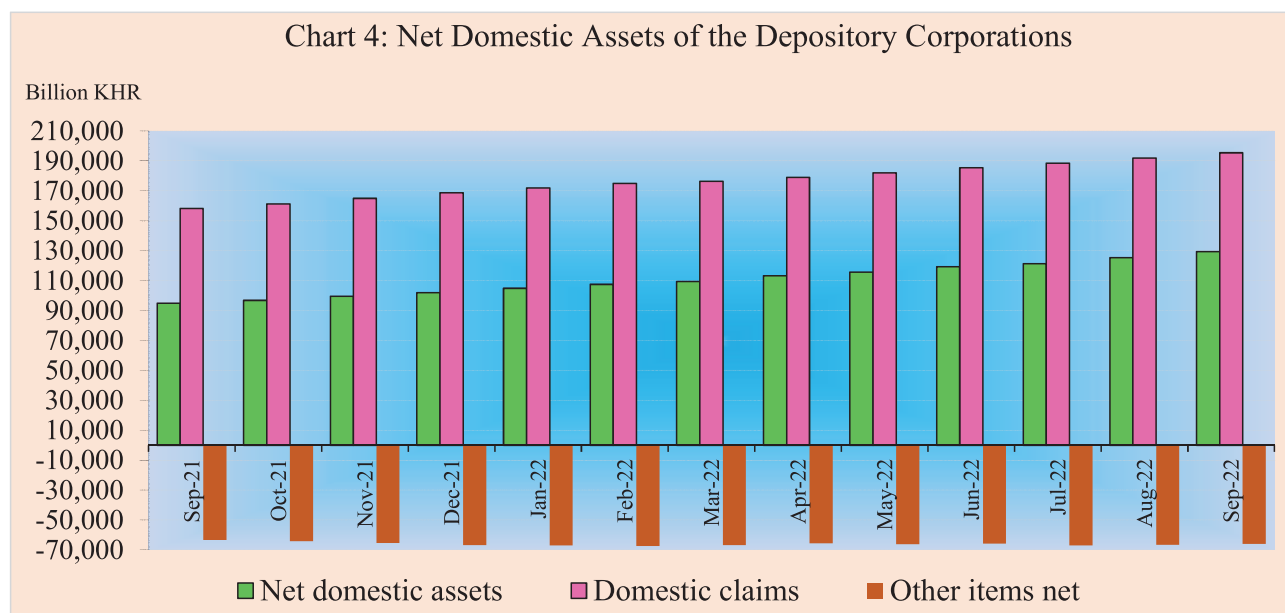
Money Supply

Broad money (M2) increased to KHR 169,403.6 billion in September 2022, up by 0.7% compared to August. The main components of M2 showed that currency outside depository corporations and other deposits increased by 1.1% and 0.9%, respectively; while transferable deposits decreased by 0.4%.



Net Domestic Assets of the Depository Corporations

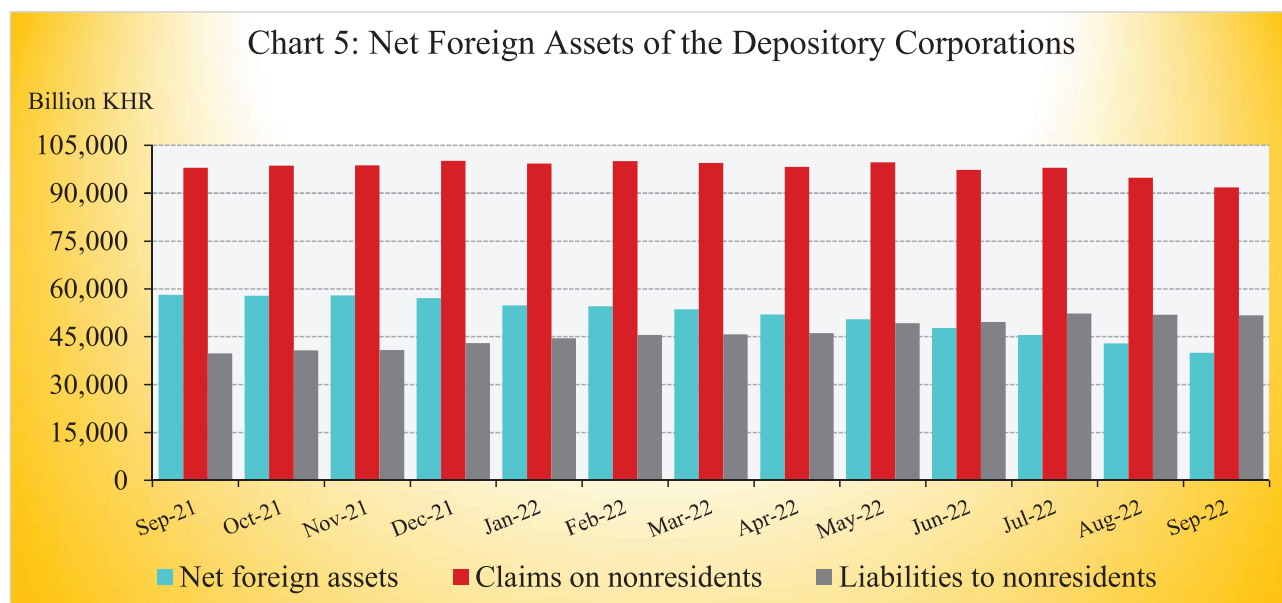
Net domestic assets of the depository corporations continued to increase to KHR 129,347.3 billion in September 2022, up by 3.3% compared to August. This was due to the increase of 1.8% and 0.9% in net domestic credit and other items net, respectively.



The increase in net domestic credit was due to the increases of 4.4% and 1.6% in net credit to other financial corporations and credit to private sector, respectively; while net credit to nonfinancial public sector declined by 0.4%. The increase in other items net was due to a decrease of 2.1% in capital accounts, while others decreased by 6.4%.

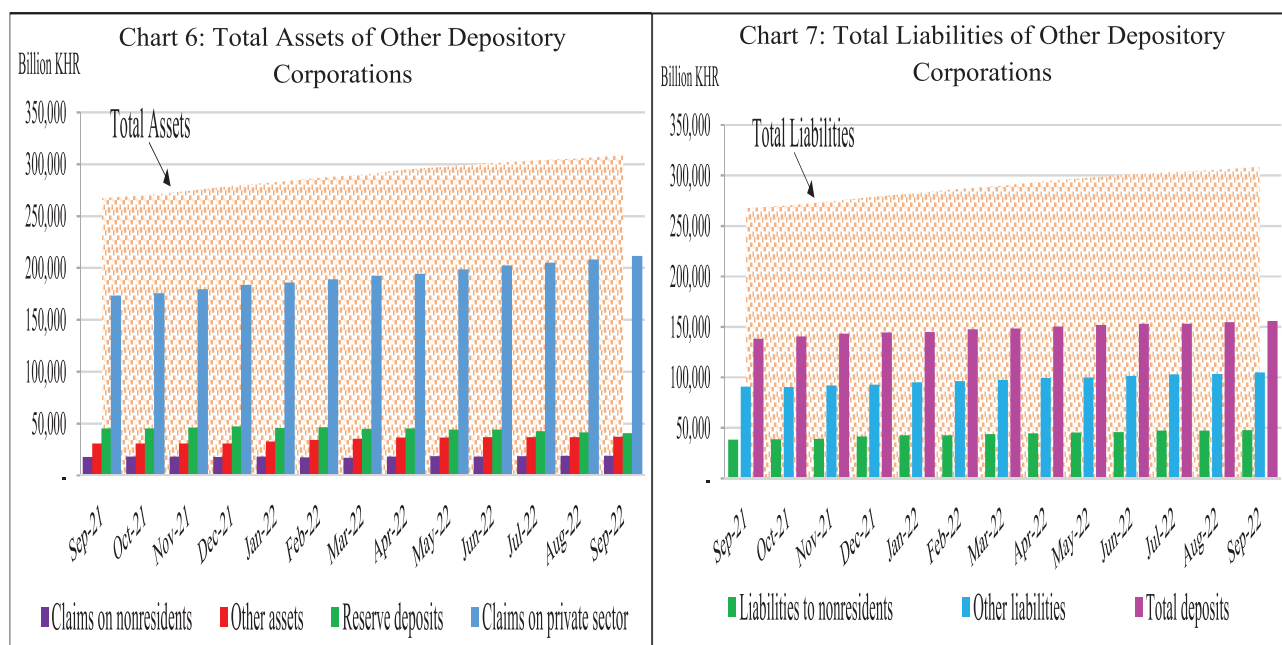
Net Foreign Assets of the Depository Corporations

Net foreign assets of the depository corporation continued to decrease to KHR 40,056.3 billion in September 2022, down by 6.8% from August. This was mainly due to the decrease of 4.2% in gross foreign reserve, while other foreign assets increased by 0.5% along with a decrease of 0.3% in foreign liabilities.



Other Depository Corporations Survey

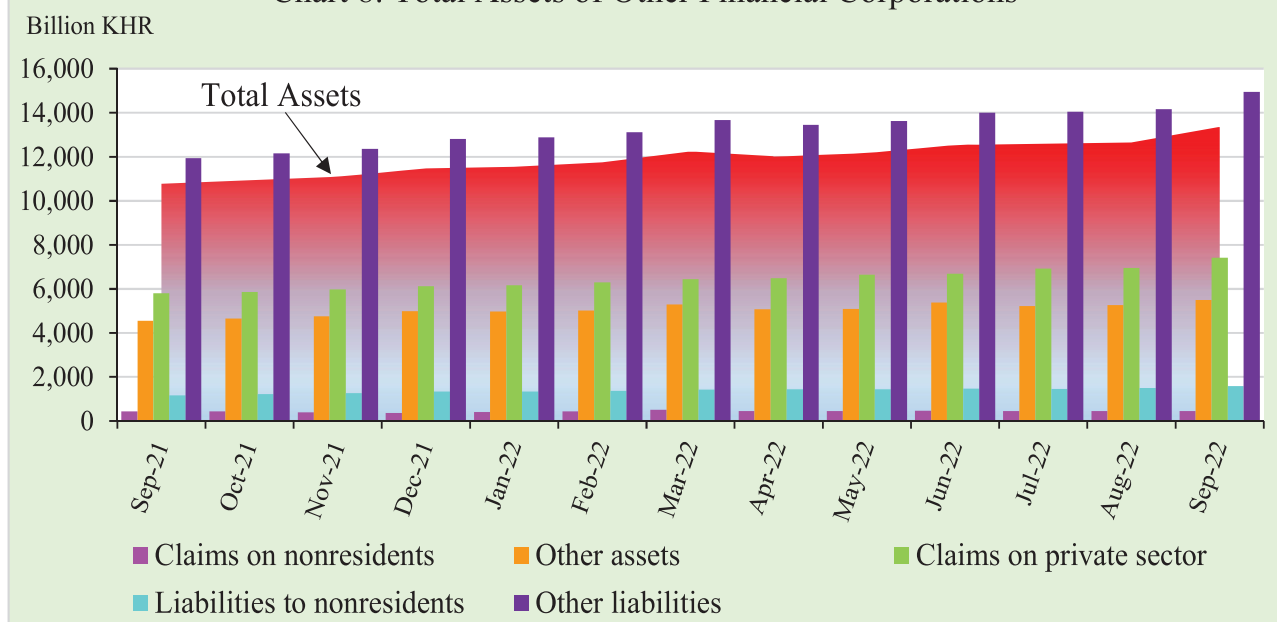
Total assets of other depository corporations (including commercial banks and microfinance deposit-taking institutions) were KHR 308,797.1 billion, increased by 1% in September 2022 compared to the previous month.



Other Financial Corporations Survey

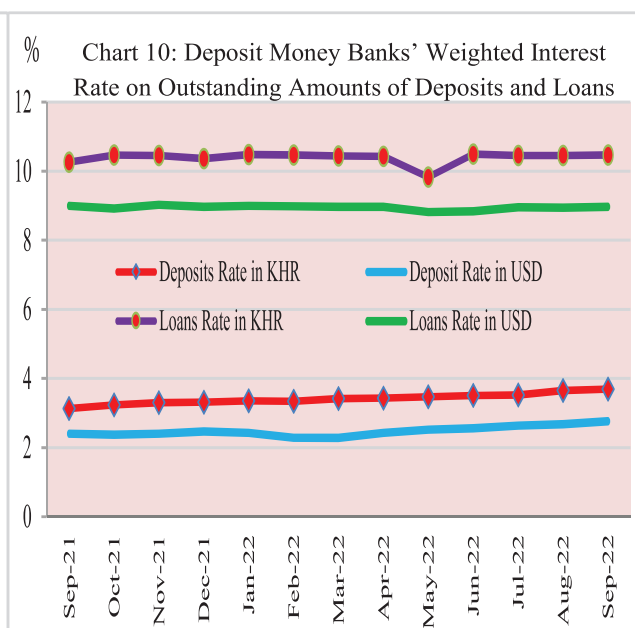
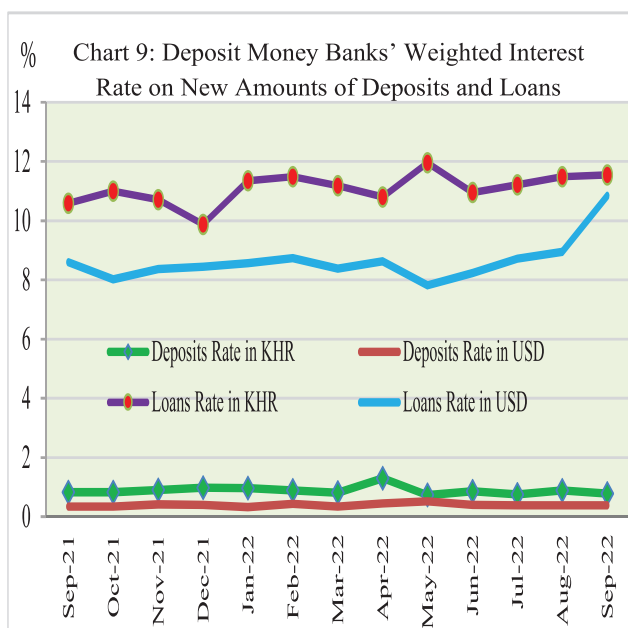
Total assets of other financial corporations were KHR 13,363 billion, up by 5.6% in September 2022 compared to August.

Chart 8: Total Assets of Other Financial Corporations



Interest Rates on Deposits and Loans

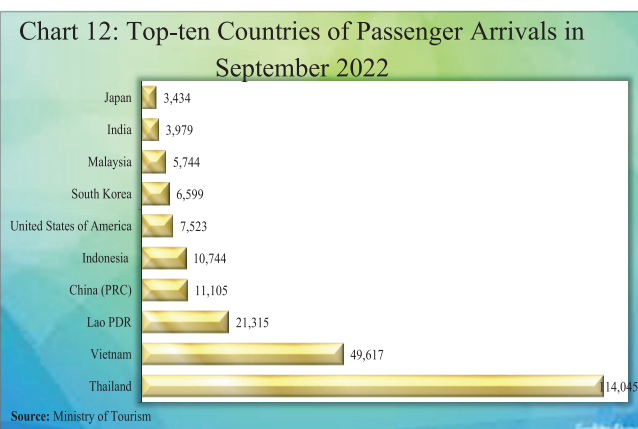
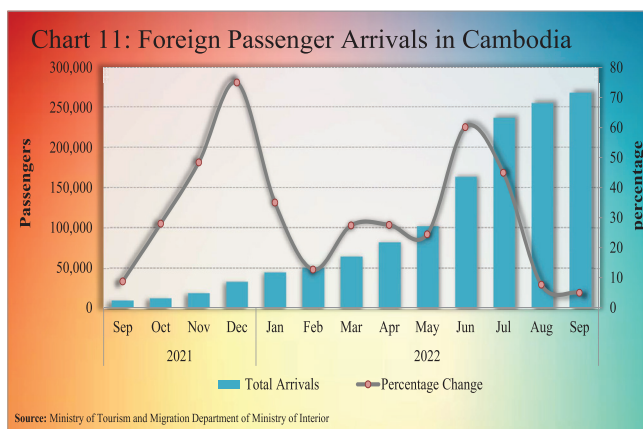
Interest rate on deposits and loans of banking sector in September 2022 showed that the (new amount) weighted average interest rate on deposit in KHR decreased by 0.11% to 0.77%, while deposit in USD increased by 0.01% to 0.39%. At the same time, the weighted average interest rate on loan in KHR increased by 0.05% to 11.54%, and loan in USD increased by 1.89% to 10.84%.



Foreign Tourist Arrivals

In September 2022, the total number of passenger arrivals was 267,500, increased by 5% following the increase of 7.7% in the previous month. The main purposes of the passenger arrivals in Cambodia were for vacation, and business and professional, which were accounted for 79.7% and 18% of the total, respectively.

Most of the foreign passengers were from Thailand, Vietnam, Laos PDR, China P.R.C., Indonesia, United States of America, South Korea, Malaysia, India, and Japan.



International Trade in Goods

International trade in goods showed a deficit of KHR 1,773.9 billion (21.6%) in September 2022, following the deficit of KHR 3,869 billion (34.8%) in August.



The major components of total exports were Garment, Electrical Part, Other Textile Product, Footwear, Bicycle, Rice, Rubber, Wood Products, Vehicle and Bicycle Part, and Fish and other agricultural Products. In addition, the major components of total imports were Fabric, Oil, Vehicle, Gold, Food and Beverage, Equipment Construction, Garment, Steel, Medicine, Other Electronic Equipment, Fertilizer, and Cigarette.

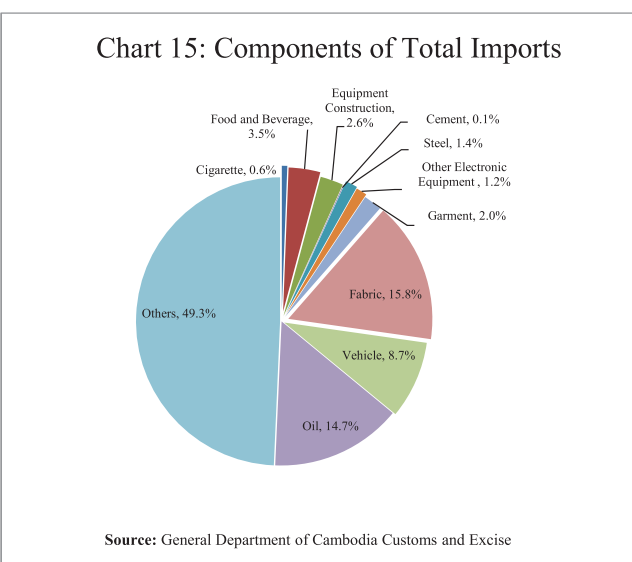
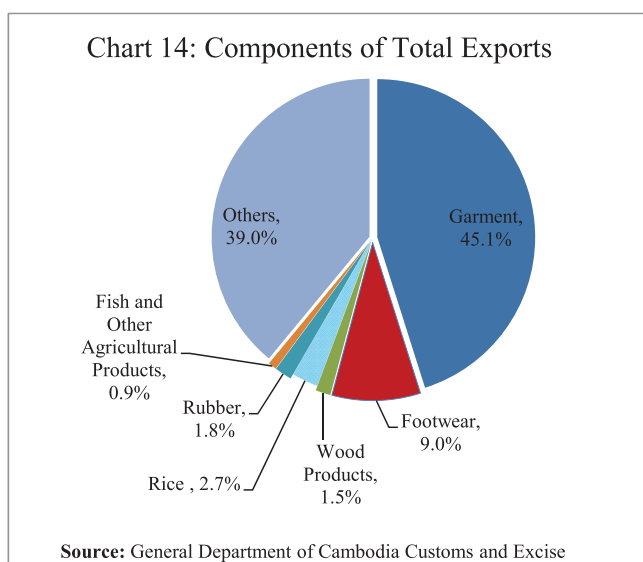


Table 1: Consumer Price Index and Inflation Rate

1. Consumer Price Index (CPI) and Component Indices (Oct-Dec. 2006 = 100)	May-22	Jun-22	Jul-22	Aug-22	Sep-22
CPI (all items)	200.39	202.06	199.28	198.35	197.39
Food and Non-Alcoholic Beverages	245.15	246.86	245.39	244.35	244.56
Alcoholic Beverages, Tobacco and Narcotics	179.45	179.75	179.28	178.92	178.92
Clothing and Footwear	175.95	176.81	175.75	175.63	176.47
Housing, Water, Electricity, Gas and other Fuels	142.51	143.38	140.83	139.68	138.90
Furnishings and Household Maintenance	161.17	161.40	161.03	160.92	160.92
Health	143.17	143.59	142.69	141.94	141.54
Transport	137.44	140.80	129.79	129.62	125.92
Communication	66.60	66.62	66.54	66.48	66.41
Recreation and Culture	128.81	129.72	128.79	128.75	128.07
Education	168.96	168.96	168.96	168.96	168.96
Restaurants	325.91	330.24	326.94	323.82	316.48
Miscellaneous Goods and Services	168.02	168.38	167.26	166.65	165.98
2. Percentage Change in the CPI and its Components					
2.1 Month on Month Change (%)					
CPI (all items)	0.80	0.84	-1.38	-0.47	-0.48
Food and Non-Alcoholic Beverages	0.49	0.70	-0.60	-0.42	0.08
Alcoholic Beverages, Tobacco and Narcotics	0.17	0.17	-0.26	-0.20	0.00
Clothing and Footwear	0.44	0.49	-0.60	-0.07	0.48
Housing, Water, Electricity, Gas and other Fuels	0.45	0.61	-1.78	-0.82	-0.56
Furnishings and Household Maintenance	0.22	0.15	-0.23	-0.07	0.00
Health	0.27	0.30	-0.62	-0.53	-0.28
Transport	3.54	2.44	-7.82	-0.13	-2.85
Communication	0.01	0.02	-0.13	-0.09	-0.11
Recreation and Culture	0.63	0.71	-0.72	-0.03	-0.53
Education	0.00	0.00	0.00	0.00	0.00
Restaurants	1.46	1.33	-1.00	-0.95	-2.27
Miscellaneous Goods and Services	0.24	0.22	-0.67	-0.37	-0.40
2.2 Year on Year Change (%)					
CPI (all items)	7.17	7.85	5.38	4.94	4.44
Food and Non-Alcoholic Beverages	5.53	6.50	4.95	4.31	4.55
Alcoholic Beverages, Tobacco and Narcotics	1.40	1.50	1.23	1.09	1.16
Clothing and Footwear	9.71	9.24	7.04	6.12	6.38
Housing, Water, Electricity, Gas and other Fuels	8.73	8.73	5.91	4.94	4.46
Furnishings and Household Maintenance	4.73	4.42	3.61	3.42	3.61
Health	3.47	3.36	2.10	1.56	1.38
Transport	18.73	18.74	7.42	8.80	5.28
Communication	0.12	0.25	0.03	0.07	-0.16
Recreation and Culture	7.06	7.74	6.35	6.74	5.89
Education	2.46	2.46	2.46	2.46	2.46
Restaurants	9.22	10.57	8.28	8.19	5.04
Miscellaneous Goods and Services	4.86	4.86	3.23	2.71	2.63
3. Three-month moving average CPI (All Items)	199.25	200.42	200.58	199.90	198.34
Year on Year Change (%)	7.20	7.42	6.79	6.05	4.92
4. Twelve-month moving average CPI (All Items)	192.93	194.15	195.00	195.78	196.48
Year on Year Change (%)	4.58	5.01	5.18	5.30	5.42

Source: National Institute of Statistics

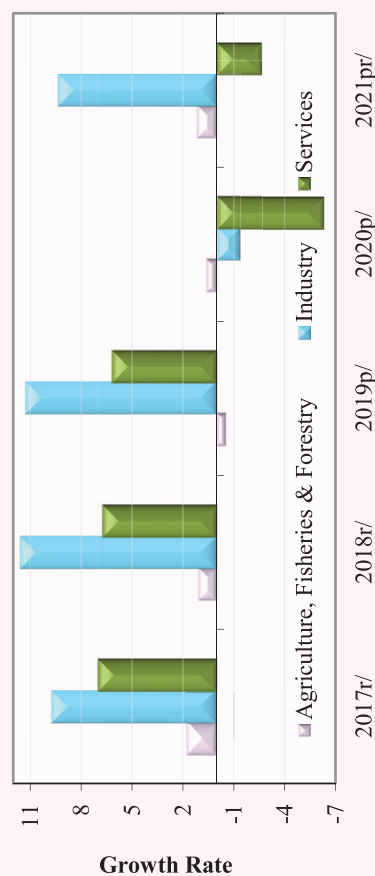
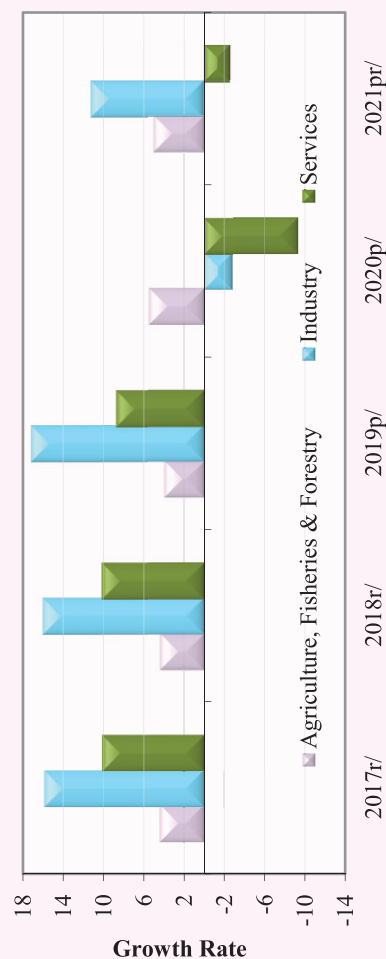
Table 2: Consumer Items Showing Price Decreased in September 2022

No.	Description	Weight	Index			Percentage Change	
			Sep-21	Aug-22	Sep-22	Monthly	Yearly
1	GASOLINE	4.969	99.56	115.54	106.93	-7.4	7.4
2	DIESEL	0.144	111.80	156.22	148.56	-4.9	32.9
3	GAS	2.699	133.89	155.57	151.63	-2.5	13.3
4	RESTAURANTS AND HOTELS	5.861	301.29	323.82	316.48	-2.3	5.0
5	LIQUID FUELS	0.099	156.97	167.26	164.53	-1.6	4.8
6	PROCESSED EGGS	0.079	179.44	180.39	177.60	-1.5	-1.0
7	NOODLES	1.008	235.27	242.26	238.85	-1.4	1.5
8	SOLID FUELS	1.475	246.66	255.41	252.60	-1.1	2.4
9	PREPARED AND PRESERVED VEGETABLES	0.337	191.05	193.92	192.05	-1.0	0.5
10	FRESH EGGS	1.013	164.17	167.45	165.84	-1.0	1.0
11	OTHER SERVICES N.E.C.	0.892	117.91	116.26	115.19	-0.9	-2.3
12	TRANSPORT SERVICES	0.812	166.28	172.45	170.92	-0.9	2.8
13	OTHER GRAINS	0.090	320.07	355.38	352.99	-0.7	10.3
14	RECREATION AND CULTURE	2.912	120.94	128.75	128.07	-0.5	5.9
15	MEDICAL PRODUCTS, APPLIANCES AND EQUIPMENT	3.588	138.25	141.34	140.77	-0.4	1.8
16	MOTOR OIL	0.062	166.11	180.68	180.10	-0.3	8.4
17	DRIED AND PRESERVED FRUITS	0.086	198.95	198.98	198.35	-0.3	-0.3
18	OTHER APPLIANCES, ARTICLES AND PRODUCTS FOR PERSONAL CARE	0.399	159.53	171.73	171.26	-0.3	7.4
19	TELEPHONE AND TELEFAX EQUIPMENT	0.725	47.30	47.24	47.13	-0.2	-0.4
20	PERSONAL EFFECTS N.E.C	0.876	209.09	217.01	216.51	-0.2	3.6
21	DUCK (FRESH)	0.319	211.86	218.93	218.44	-0.2	3.1
22	RICE, QUALITY NO.2 WHITE, NEANG-MENH, BATTAMBANG	2.681	244.22	250.39	250.00	-0.2	2.4
23	GLUTINOUS RICE, QUALITY NO.1, WHITE, KHMER	0.429	147.20	150.55	150.33	-0.2	2.1
24	RICE, QUALITY NO.1 WHITE, PHAKA KANHEY, BATTAMBANG	3.052	242.15	246.73	246.37	-0.1	1.7
25	DRIED NUTS AND EDIBLE SEEDS	0.556	248.40	249.81	249.46	-0.1	0.4
26	BEER	0.532	129.90	132.57	132.47	-0.1	2.0
27	SUGAR, JAM, HONEY, CHOCOLATE AND CONFECTIONERY	1.489	153.27	163.39	163.31	-0.1	6.6
28	TRADITIONAL CAKES	0.561	225.41	228.70	228.59	0.0	1.4
29	GLASSWARE, TABLEWARE AND HOUSEHOLD UTENSILS	0.078	149.48	152.23	152.17	0.0	1.8
30	MOTOR CYCLES	2.736	133.01	141.06	141.01	0.0	6.0
31	FRUIT VEGETABLES	1.138	327.72	355.78	355.66	0.0	8.5
32	BICYCLES	0.103	149.63	150.91	150.87	0.0	0.8
33	FURNITURE AND FURNISHINGS, CARPETS AND OTHER FLOOR COVERINGS	0.626	231.96	238.04	238.02	0.0	2.6
34	SPIRITS	0.014	165.62	169.93	169.92	0.0	2.6
35	GOODS AND SERVICES FOR ROUTINE HOUSEHOLD MAINTENANCE	1.610	133.20	139.26	139.26	0.0	4.5
36	TOBACCO	0.831	201.73	201.89	201.88	0.0	0.1
37	ACTUAL RENTALS FOR HOUSING	1.054	100.00	100.00	100.00	0.0	0.0
38	SERVICES FOR THE MAINTENANCE AND REPAIR OF THE DWELLING	0.435	204.77	216.01	216.01	0.0	5.5
39	WATER SUPPLY AND MISCELLANEOUS SERVICES RELATED TO THE DWELLING	2.307	100.00	100.00	100.00	0.0	0.0
40	ELECTRICITY	5.352	102.16	102.16	102.16	0.0	0.0

Source: National Institute of Statistics

Table 3: Gross Domestic Product (GDP)

	At Constant 2000 Prices					At Current Prices				
	2017r/	2018r/	2019p/	2020p/	2021pr/	2017r/	2018r/	2019p/	2020p/	2021pr/
GDP in Billion KHR	49,177	52,850	56,578	54,826	56,486	89,831	99,544	110,014	105,892	110,506
GDP in Million USD	12,148	13,001	13,901	13,444	13,794	22,191	24,488	27,030	25,967	26,986
GDP % Growth Rate	7.0	7.5	7.1	-3.1	3.0	10.6	10.8	10.5	-3.7	4.4
GDP % Growth Rate, by Economic Activity										
Agriculture, Fisheries	1.7	1.1	-0.5	0.6	1.2	4.4	4.4	4.0	5.5	5.1
Industry	9.7	11.6	11.3	-1.4	9.4	15.8	16.0	17.1	-2.8	11.2
Services	7.0	6.8	6.2	-6.3	-2.7	10.1	10.2	8.7	-9.3	-2.6
GDP Per Capita in Million	3.2	3.4	3.5	3.4	3.4	5.8	6.3	6.9	6.5	6.7
GDP Per Capita in USD	782	826	871	831	842	1,429	1,555	1,694	1,606	1,648

Chart 1: GDP by Economic Activity
(At Constant 2000 Prices)Chart 2: GDP by Economic Activity
(At Current Prices)

p/: preliminary estimates

pr/: projection

r/: revised

Source: National Institute of Statistics

Table 4: Residential Property Price Index (RPPI)

	Jun-21	Jul-21	Aug-21	Sep-21	Oct-21	Nov-21	Dec-21	Jan-22	Feb-22	Mar-22	Apr-22	May-22	Jun-22	Jul-22	Aug-22	Sep-22
Residential Property Price Index (2020 =100)																
Overall RPPI	113.5	113.0	112.1	111.0	111.0	110.2	111.0	110.7	111.9	111.2	109.4	108.6	109.0	111.9	113.5	114.6
RPPI in Phnom Penh	114.7	114.4	113.3	112.2	112.4	111.6	112.2	112.2	113.9	113.3	111.1	109.8	110.4	113.6	115.4	116.5
RPPI in Other Provinces	104.4	102.8	103.0	102.4	100.6	100.0	101.5	100.6	99.5	97.9	98.9	100.4	100.3	101.1	102.1	102.4
Month on Month Change (%)																
Overall RPPI	1.5	-0.4	-0.8	-1.0	0.0	-0.7	0.7	-0.3	1.1	-0.6	-1.6	-0.8	0.4	2.6	1.5	0.9
RPPI in Phnom Penh	1.5	-0.3	-0.9	-1.0	0.2	-0.7	0.6	0.0	1.4	-0.5	-2.0	-1.1	0.5	2.9	1.5	1.0
RPPI in Other Provinces	1.9	-1.5	0.1	-0.6	-1.7	-0.7	1.5	-0.9	-1.1	-1.6	1.0	1.5	-0.1	0.8	1.0	0.4
Year on Year Change (%)																
Overall RPPI	12.3	10.7	9.5	8.9	11.2	10.2	10.6	7.4	7.0	4.5	0.2	-2.9	-3.9	-1.0	1.3	3.2
RPPI in Phnom Penh	14.1	12.5	10.6	10.3	12.9	11.5	11.3	7.8	7.8	5.2	0.5	-2.8	-3.7	-0.7	1.8	3.8
RPPI in Other Provinces	-0.5	-2.6	0.8	-1.1	-1.3	0.2	5.0	6.0	3.4	1.6	-0.6	-2.0	-3.9	-1.7	-0.9	0.1

Note:

The methodology used to generate the RPPI index is the time-dummy hedonic method with 18-month rolling windows, which complies with the IMF's RPPI Practical Compilation Guide published in 2020 (<https://www.imf.org/en/Data/Statistics/RPPI-guide>).

*Revised data

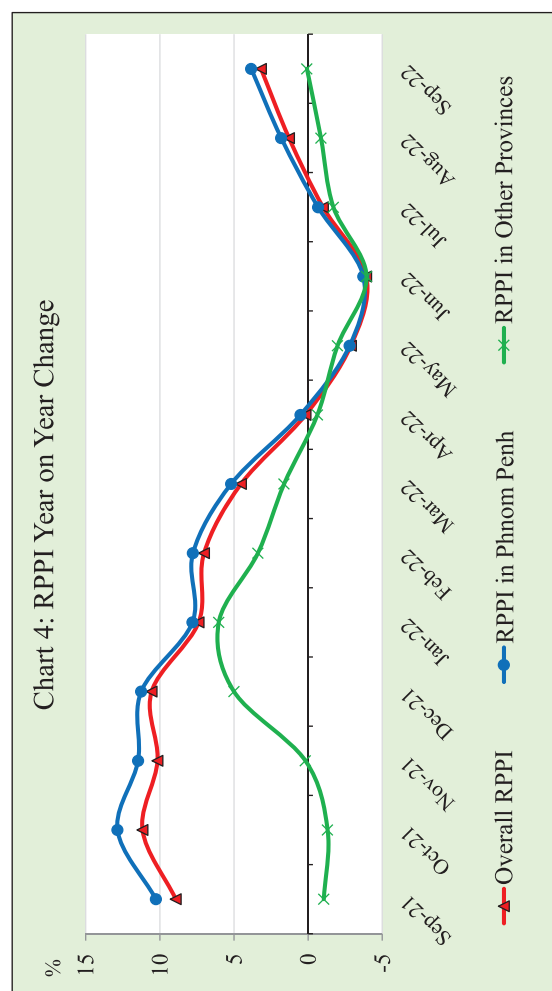
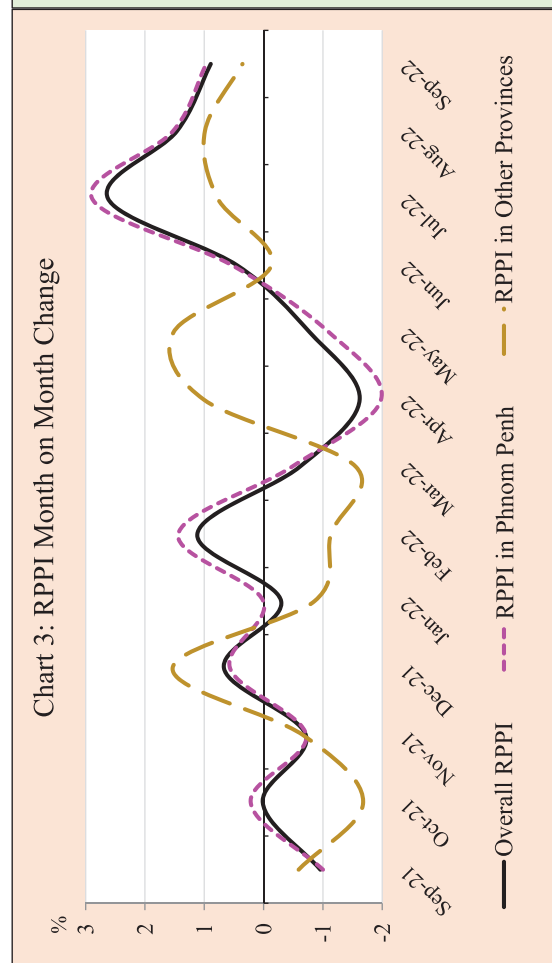


Table 5: Investment Projects Approved by Sectors

(In Million USD)

Sector	Agriculture		Industries		Services		Tourism		Energy		Health care (hospital)		Agro-Industry		Civil Engineering		Infrastructure		Mines		Other		Total	
	Projects	Fixed Assets	Projects	Fixed Assets	Projects	Fixed Assets	Projects	Fixed Assets	Projects	Fixed Assets	Projects	Fixed Assets	Projects	Fixed Assets	Projects	Fixed Assets	Projects	Fixed Assets	Projects	Fixed Assets	Projects	Fixed Assets	Projects	Fixed Assets
2018																								
Total	13	444.2	115	984.0	10	2,869.9	12	1,577.8	-	-	-	-	-	-	-	-	-	-	-	-	-	-	150	5,875.8
2019																								
Total	5	68.7	164	859.4	10	1,028.3	17	6,051.6	3	158.6	-	-	-	-	-	-	-	-	-	-	-	-	199	8,166.6
2020																								
Q1	-	-	41	191.0	2	592.1	2	133.0	-	-	-	-	-	-	-	-	-	-	-	-	-	-	45	916.1
Q2	4	62.5	44	509.0	2	198.1	3	202.4	2	282.1	-	-	-	-	-	-	-	-	-	-	-	-	55	1,254.1
Q3	1	31.7	18	109.3	-	-	1	3,515.1	1	39.9	-	-	-	-	-	-	-	-	-	-	-	-	21	3,695.9
Q4	2	11.4	27	221.6	1	9.6	-	-	3	356.8	-	-	-	-	-	-	-	-	-	-	-	-	33	599.4
Total	7	105.6	130	1,030.9	5	799.8	6	3,850.5	6	678.7	-	-	-	-	-	-	-	-	-	-	-	-	154	6,465.5
2021																								
Q1	2	29.0	21	579.3	2	9.9	-	-	2	55.0	1	6.3	-	-	-	-	-	-	-	-	-	-	28	679.6
Q2	-	-	22	121.6	-	-	2	127.8	-	-	1	12.5	-	-	-	-	-	-	-	-	-	-	25	261.9
Q3	2	14.0	26	166.6	-	-	-	-	2	13.3	-	-	-	-	-	-	-	-	-	-	-	-	30	193.9
Q4	1	17.2	19	113.1	-	-	-	-	1	441.4	-	-	-	-	-	-	-	-	-	-	3	11.4	24	583.2
Total	5	60.3	88	980.6	2	9.9	2	127.8	5	509.7	2	18.8	-	-	-	-	-	-	-	-	3	11.4	107	1,718.7
2022																								
Q1	3	75.6	28	166.0	1	10.0	1	129.0	1	389.4	1	15.0	2	9.1	1	4.2	1	1,300.0	-	-	1	8.2	40	2,106.5
Q2	1	4.3	27	181.2	1	12.7	-	-	-	-	-	-	-	-	1	71.6	-	-	-	-	5	64.4	35	334.2
Q3	-	-	24	122.9	-	-	2	35.3	-	-	3	64.0	1	7.2	-	-	-	-	1	13.0	1	23.4	32	265.8
Total	4	79.9	79	470.1	2	22.7	3	164.3	1	389.4	4	79.0	3	16.3	2	75.8	1	1,300.0	1	13.0	7	96.0	107	2,706.5

Chart 5: Investment Fixed Assets by Sectors

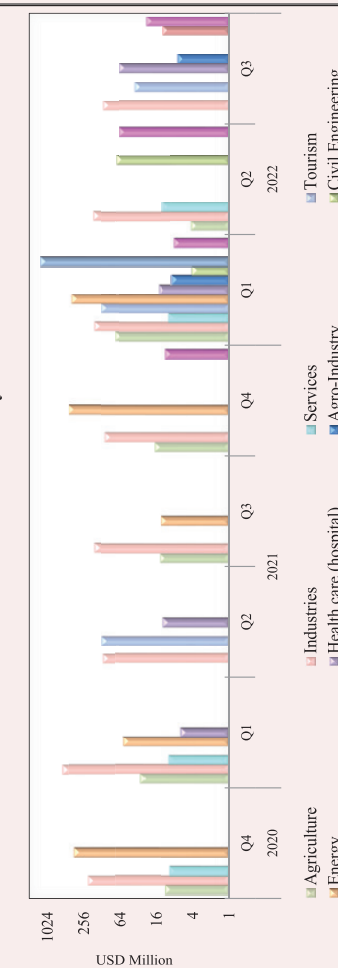
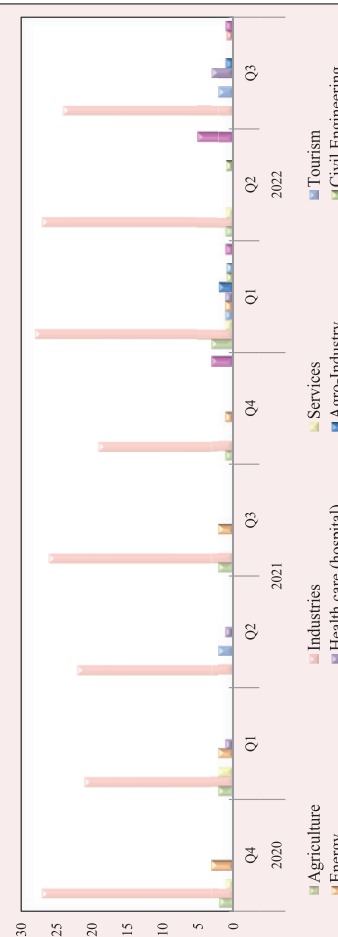


Chart 6: Number of Investment Projects by Sectors



Source: Council for the Development of Cambodia (Cambodian Investment Board)

* Revised data

Table 6: Investment Projects Approved by Major Countries*

(In Million USD)

Country	2020	2021				2022		
	Q4	Q1	Q2	Q3	Q4	Q1	Q2	Q3
Cambodia	1,319.9	470.6	82.6	48.5	461.8	1,554.6	27.6	120.8
China	245.0	57.8	125.2	90.3	66.5	478.0	214.7	95.1
Korea	-	-	-	-	4.2	3.0	8.2	6.8
United States	-	-	-	-	21.0	-	-	-
Thailand	-	37.5	-	-	-	-	8.9	-
Vietnam	-	-	-	-	-	-	-	-
Malaysia	43.0	16.5	-	-	-	5.7	-	-
Singapore	-	1.9	-	-	5.7	-	-	-
Taiwan	38.7	9.9	41.6	45.5	-	17.2	18.0	17.1
Australia	-	-	-	-	-	-	-	-
England	-	-	-	-	-	6.8	-	-
Japan	-	-	-	-	-	3.3	-	26.0
Hong Kong	11.1	83.3	12.5	9.6	24.0	38.1	56.7	-
Others	5.6	2.1	-	-	-	-	-	-
Total	1,663.4	679.6	261.9	193.9	583.2	2,106.5	334.2	265.8
(Share of Total)								
Cambodia	79.4	69.2	31.5	25.0	79.2	73.8	8.3	45.5
China	14.7	8.5	47.8	46.6	11.4	22.7	64.3	35.8
Korea	-	-	-	-	0.7	0.1	2.5	2.5
United States	-	-	-	-	3.6	-	-	-
Thailand	-	5.5	-	-	-	-	2.7	-
Vietnam	-	-	-	-	-	-	-	-
Malaysia	2.6	2.4	-	-	-	0.3	-	-
Singapore	-	0.3	-	-	1.0	-	-	-
Taiwan	2.3	1.4	15.9	23.5	-	0.8	5.4	6.4
Australia	-	-	-	-	-	-	-	-
England	-	-	-	-	-	0.3	-	-
Japan	-	-	-	-	-	0.2	-	9.8
Hong Kong	0.7	12.3	4.8	4.9	4.1	1.8	17.0	-
Others	0.3	0.3	-	-	-	-	-	-
Total	100.0	100.0	100.0	100.0	100.0	100.0	100.0	100.0

* Fixed Assets

Source: Council for the Development of Cambodia (Cambodian Investment Board)

Table 7: Daily Exchange Rate in September 2022

(KHR/USD)

Day	Parallel Market Rate			Official Rate	Daily Change*	
	Purchase	Sale	Midpoint		Spread	% Change
1	4,104	4,115	4,110	4,108	0.0	0.0
2	4,110	4,119	4,115	4,114	6.0	0.1
3	4,112	4,122	4,117	4,114	2.0	0.0
4	4,112	4,122	4,117	4,114	0.0	0.0
5	4,113	4,123	4,118	4,109	1.0	0.0
6	4,114	4,123	4,119	4,116	1.0	0.0
7	4,113	4,121	4,117	4,117	-1.0	0.0
8	4,111	4,119	4,115	4,117	-2.0	0.0
9	4,111	4,119	4,115	4,114	0.0	0.0
10	4,106	4,116	4,111	4,114	-5.0	-0.1
11	4,106	4,116	4,111	4,114	0.0	0.0
12	4,105	4,115	4,110	4,113	-1.0	0.0
13	4,105	4,114	4,110	4,110	0.0	0.0
14	4,108	4,117	4,113	4,109	3.0	0.1
15	4,110	4,118	4,114	4,110	2.0	0.0
16	4,110	4,119	4,115	4,115	0.0	0.0
17	4,113	4,123	4,118	4,115	3.0	0.1
18	4,113	4,123	4,118	4,115	0.0	0.0
19	4,113	4,123	4,118	4,117	0.0	0.0
20	4,113	4,123	4,118	4,118	0.0	0.0
21	4,114	4,123	4,119	4,118	1.0	0.0
22	4,114	4,123	4,119	4,118	0.0	0.0
23	4,113	4,123	4,118	4,117	-1.0	0.0
24	4,113	4,123	4,118	4,117	0.0	0.0
25	4,113	4,123	4,118	4,117	0.0	0.0
26	4,113	4,123	4,118	4,117	0.0	0.0
27	4,113	4,123	4,118	4,120	0.0	0.0
28	4,113	4,123	4,118	4,118	0.0	0.0
29	4,113	4,123	4,118	4,119	0.0	0.0
30	4,117	4,126	4,122	4,119	4.0	0.1
Average Rate	4,111	4,121	4,116	4,115	0.4	0.0

* Spread of Daily Purchasing Market Rate

Table 8: Monthly Exchange Rate

(KHR/USD, End-Period)

Month	Market Rate				Official Rate
	Purchase	Monthly %Change	Sale	Midpoint	
Dec-15	4,048	0.10	4,055	4,052	4,050
Dec-16	4,039	0.17	4,050	4,045	4,037
Dec-17	4,037	0.07	4,046	4,042	4,037
Dec-18	4,027	-0.27	4,039	4,033	4,018
Dec-19	4,079	0.12	4,089	4,084	4,075
2020					
Aug	4,107	0.15	4,115	4,111	4,105
Sep	4,109	0.05	4,117	4,113	4,100
Oct	4,084	-0.61	4,094	4,089	4,060
Nov	4,069	-0.37	4,077	4,073	4,048
Dec	4,069	0.00	4,084	4,077	4,045
2021					
Jan	4,077	0.20	4,089	4,083	4,065
Feb	4,083	0.15	4,094	4,089	4,069
Mar	4,062	-0.51	4,069	4,066	4,045
Apr	4,068	0.15	4,083	4,076	4,048
May	4,107	0.96	4,116	4,112	4,072
Jun	4,102	-0.12	4,112	4,107	4,075
Jul	4,107	0.12	4,117	4,112	4,072
Aug	4,119	0.29	4,129	4,124	4,080
Sep	4,119	0.00	4,130	4,125	4,079
Oct	4,099	-0.49	4,109	4,104	4,066
Nov	4,102	0.07	4,113	4,108	4,069
Dec	4,109	0.17	4,118	4,114	4,074
2022					
Jan	4,088	-0.51	4,098	4,093	4,066
Feb	4,086	-0.05	4,095	4,091	4,066
Mar	4,068	-0.44	4,078	4,073	4,050
Apr	4,068	0.00	4,080	4,074	4,046
May	4,088	0.49	4,097	4,093	4,062
Jun	4,091	0.07	4,100	4,096	4,070
Jul	4,097	0.15	4,104	4,101	4,099
Aug	4,104	0.17	4,115	4,110	4,107
Sep	4,117	0.32	4,126	4,122	4,119

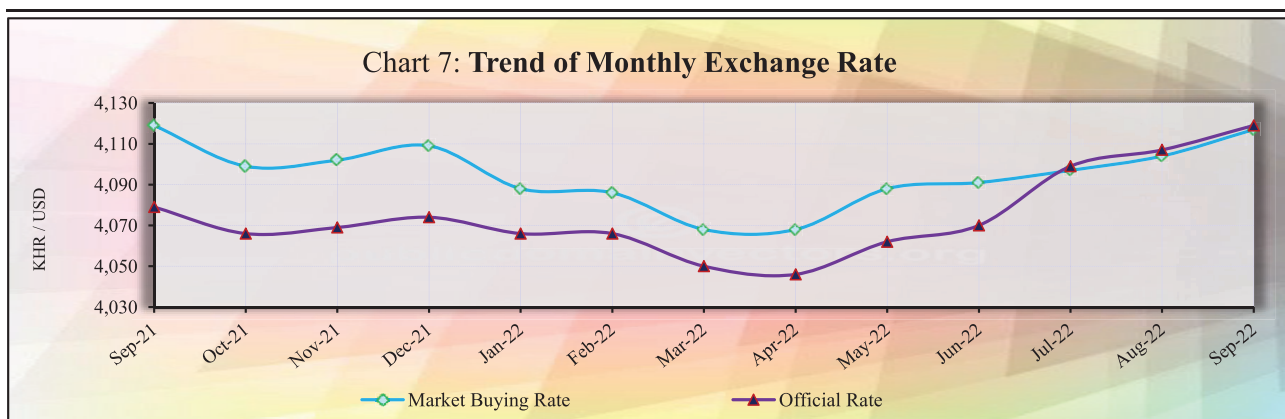


Table 9: The Value of KHR Against Other Currencies

(Official Buying Rate, End-Period)

Unit	SDR	US Dollar	Euro	Japanese Yen	British Pounds	Indonesian Rupiah	Malaysian Ringgit	Philippines Peso	Singapore Dollar	Thai Baht	Vietnamese Dong	China Yuan
	1	1	1	100	1	1000	1	100	1	1	1000	1
Dec-17	5,735	4,037	4,821	3,574	5,426	298	994	8,094	3,017	124	178	618
Dec-18	5,588	4,018	4,597	3,641	5,098	277	969	7,653	2,942	124	174	584
Dec-19	5,635	4,075	4,565	3,743	5,344	293	994	8,050	3,023	136	176	583
2020												
Nov	5,769	4,048	4,844	3,896	5,395	288	995	8,421	3,027	134	175	616
Dec	5,826	4,045	4,962	3,908	5,465	287	1,000	8,423	3,049	135	175	619
2021												
Jan	5,848	4,065	4,926	3,896	5,578	289	1,005	8,450	3,059	136	176	630
Feb	5,887	4,069	4,944	3,831	5,686	289	1,003	8,372	3,063	135	177	630
Mar	5,731	4,045	4,742	3,664	5,558	280	975	8,333	3,003	129	175	616
Apr	5,807	4,048	4,912	3,731	5,649	279	987	8,352	3,056	129	176	625
May	5,878	4,072	4,962	3,705	5,772	285	983	8,520	3,075	130	177	640
Jun	5,814	4,075	4,850	3,686	5,645	281	981	8,402	3,030	127	177	630
Jul	5,813	4,072	4,842	3,722	5,687	281	961	8,095	3,010	124	177	631
Aug	5,804	4,080	4,813	3,711	5,613	284	982	8,189	3,033	126	179	631
Sep	5,766	4,079	4,732	3,646	5,480	285	974	8,022	2,997	120	179	630
Oct	5,743	4,066	4,716	3,573	5,584	287	980	8,017	3,014	122	179	636
Nov	5,689	4,069	4,593	3,574	5,416	284	961	8,079	2,973	121	179	637
Dec	5,702	4,074	4,614	3,541	5,499	286	977	7,992	3,015	122	179	639
2022												
Jan	5,655	4,066	4,534	3,524	5,450	283	972	7,938	2,999	122	180	639
Feb	5,669	4,066	4,546	3,518	5,436	283	968	7,920	2,993	124	178	644
Mar	5,602	4,050	4,521	3,314	5,320	282	964	7,787	2,994	122	177	638
Apr	5,421	4,046	4,254	3,097	5,049	279	928	7,745	2,920	118	176	611
May	5,480	4,062	4,376	3,179	5,136	279	931	7,767	2,972	119	175	610
Jun	5,425	4,070	4,250	2,978	4,936	274	925	7,393	2,922	116	175	607
Jul	5,398	4,099	4,177	3,050	4,989	275	921	7,346	2,972	113	175	608
Aug	5,356	4,107	4,117	2,961	4,789	277	918	7,308	2,938	113	175	595
Sep	5,255	4,119	4,049	2,853	4,605	270	889	6,985	2,878	108	173	578
Monthly % Change	-1.89	0.29	-1.65	-3.65	-3.84	-2.53	-3.16	-4.42	-2.04	-4.42	-1.14	-2.86

Table 10: Deposit Money Bank's Interest Rates on Deposits and Loans in KHR and USD

	Dec-18	Dec-19	Dec-20	Mar-21	Apr-21	May-21	Jun-21	Jul-21	Aug-21	Sep-21	Oct-21	Nov-21	Dec-21	Jan-22	Feb-22	Mar-22	Apr-22	May-22	Jun-22	Jul-22	Aug-22	Sep-22
<i>Weighted Average Rate on New Amount</i>																						
Interest Rate on Deposits and Loans in KHR																						
Deposit (1)	0.33	0.57	0.58	0.58	0.73	0.65	0.65	0.52	0.65	0.83	0.82	0.90	0.97	0.96	0.89	0.81	1.30	0.73	0.86	0.75	0.88	0.77
Demand Deposits	0.03	0.12	0.03	0.09	0.04	0.04	0.04	0.04	0.06	0.34	0.35	0.31	0.35	0.38	0.36	0.31	0.70	0.11	0.12	0.10	0.09	0.17
Saving Deposits	0.59	0.60	0.60	0.71	0.50	0.60	0.61	0.58	0.59	0.89	0.89	1.04	1.05	1.08	1.07	1.02	1.51	0.77	0.73	0.75	0.73	0.77
Term Deposits	5.09	4.10	5.34	5.40	5.59	5.16	4.47	4.11	5.26	4.34	4.39	4.24	4.79	5.51	5.54	5.71	6.01	5.93	5.78	5.63	6.78	5.90
Other Deposits	0.00	2.47	3.49	3.16	2.19	2.25	2.20	2.20	2.20	2.20	2.18	2.15	2.20	5.83	5.98	0.00	5.81	5.89	5.97	0.93	2.31	4.97
Loans (2)	12.21	8.59	9.82	10.56	9.89	10.67	10.39	10.74	10.24	10.59	11.00	10.70	9.87	11.34	11.49	11.18	10.79	11.95	10.96	11.21	11.49	11.54
Overdraft	8.30	7.72	7.14	8.76	8.19	7.45	8.29	8.35	7.73	8.28	7.76	7.19	6.32	13.00	12.70	11.11	15.08	11.74	12.03	9.54	9.87	13.61
Credit Card	16.98	16.73	14.21	15.93	17.66	14.07	13.29	14.03	14.54	14.14	13.82	13.07	13.84	13.26	14.53	14.39	10.89	14.17	14.71	14.73	12.96	12.96
Term Loans	12.36	9.13	10.15	10.77	9.95	10.82	10.70	11.04	10.33	10.78	11.04	10.85	10.18	11.49	11.54	11.29	10.85	12.04	11.02	11.33	11.59	11.60
Other Loans	7.81	5.59	6.47	6.85	7.50	6.86	7.26	7.66	6.40	6.79	5.61	6.87	7.00	6.97	6.22	7.45	6.24	7.33	5.87	5.63	6.99	7.02
Interest Rate on Deposits and Loans in USD																						
Deposit (1)	0.72	0.58	0.36	0.38	0.30	0.36	0.35	0.34	0.30	0.34	0.34	0.41	0.40	0.32	0.43	0.34	0.45	0.52	0.40	0.38	0.38	0.39
Demand Deposits	0.30	0.20	0.10	0.07	0.07	0.07	0.14	0.11	0.08	0.15	0.20	0.17	0.18	0.13	0.17	0.17	0.28	0.21	0.17	0.20	0.18	0.18
Saving Deposits	0.36	0.24	0.17	0.23	0.16	0.17	0.17	0.17	0.15	0.20	0.21	0.24	0.21	0.20	0.28	0.21	0.33	0.44	0.23	0.22	0.22	0.22
Term Deposits	3.35	3.44	3.24	3.31	3.27	3.36	3.53	3.44	3.51	3.50	3.58	3.67	3.98	3.49	3.94	3.82	3.87	4.02	4.17	4.24	4.44	4.72
Other Deposits	2.64	2.47	0.80	0.78	0.54	4.08	0.55	0.48	0.39	0.40	0.43	0.40	0.33	3.99	3.91	4.08	3.99	3.95	4.74	2.09	4.30	4.42
Loans (2)	8.47	7.97	8.45	8.22	8.24	8.39	8.32	8.43	8.38	8.60	8.01	8.37	8.44	8.57	8.74	8.39	8.62	7.82	8.23	8.72	8.95	10.84
Overdraft	7.57	7.57	6.15	5.80	6.57	6.81	5.57	5.47	6.44	7.49	5.53	5.93	5.97	6.01	5.82	6.15	5.81	6.42	7.06	7.14	8.08	7.56
Credit Card	28.93	11.97	17.02	16.62	16.44	16.68	16.22	13.20	15.87	15.44	15.80	16.70	17.27	18.46	16.66	16.77	17.44	17.53	18.14	17.62	17.58	17.37
Term Loans	9.64	8.72	9.11	8.90	9.14	9.12	9.08	9.33	9.26	9.00	8.67	9.10	9.09	9.25	9.51	9.15	9.18	8.03	8.48	9.18	9.39	11.45
Other Loans	6.29	6.50	6.01	6.04	6.16	6.34	5.85	5.94	5.98	6.31	5.82	6.27	5.93	6.15	5.69	5.95	6.19	6.35	6.13	6.35	6.33	6.04
Weighted Average Rate on Outstanding Amount																						
Deposit (1)	2.69	2.54	2.98	2.89	2.96	2.98	2.96	3.00	3.04	3.13	3.23	3.31	3.31	3.35	3.34	3.41	3.43	3.47	3.50	3.52	3.65	3.69
Demand Deposits	0.20	0.22	0.19	0.22	0.26	0.27	0.26	0.34	0.30	0.40	0.34	0.34	0.47	0.40	0.42	0.45	0.64	0.45	0.40	0.41	0.46	0.45
Saving Deposits	1.01	0.91	0.82	0.81	0.81	0.82	0.89	0.88	0.87	0.91	0.90	0.99	1.02	1.06	1.04	1.03	0.98	1.00	0.97	1.02	1.02	1.02
Term Deposits	5.87	5.42	5.66	5.75	5.81	5.87	5.78	5.70	5.78	5.79	5.78	5.82	5.85	6.06	6.09	6.15	6.19	6.24	6.24	6.27	6.30	6.37
Other Deposits	7.00	2.81	3.20	2.96	2.60	2.58	2.58	2.58	2.59	2.24	2.20	2.18	2.20	5.67	5.76	5.79	5.80	5.73	5.75	1.51	1.49	1.39
Loans (2)	13.30	10.38	10.35	10.38	10.37	10.35	10.36	10.32	10.30	10.26	10.47	10.45	10.36	10.49	10.46	10.44	10.43	9.83	10.49	10.46	10.46	10.46
Overdraft	8.34	8.08	7.93	7.91	7.84	7.87	7.90	7.79	7.87	7.89	7.85	7.80	8.26	8.30	8.39	8.45	8.59	8.62	8.63	8.59	8.60	8.57
Credit Card	19.51	17.29	16.25	16.03	16.03	15.93	15.90	15.79	15.74	15.69	15.68	15.46	15.30	15.05	14.96	14.93	14.87	14.83	14.72	14.68	14.68	14.28
Term Loans	13.50	10.62	10.54	10.56	10.53	10.51	10.53	10.49	10.47	10.43	10.63	10.61	10.52	10.66	10.62	10.60	10.58	9.92	10.64	10.60	10.60	10.60
Other Loans	7.72	6.28	6.73	6.70	6.72	6.67	6.71	6.81	6.89	6.87	6.80	6.79	6.67	6.63	6.52	6.52	6.51	6.42	6.42	6.41	6.40	6.77
Interest Rate on Deposits and Loans in USD																						
Deposit (1)	2.24	2.25	2.37	2.59	2.32	2.32	2.32	2.42	2.42	2.40	2.37	2.41	2.46	2.43	2.28	2.28	2.43	2.52	2.55	2.63	2.68	2.76
Demand Deposits	0.46	0.35	0.41	0.39	0.41	0.41	0.40	0.40	0.42	0.40	0.39	0.40	0.40	0.37	0.35	0.36	0.37	0.41	0.40	0.43	0.42	0.44
Saving Deposits	0.61	0.43	0.41	0.40	0.40	0.41	0.41	0.40	0.41	0.45	0.47	0.49	0.47	0.46	0.45	0.46	0.48	0.55	0.57	0.56	0.56	0.58
Term Deposits	4.38	4.34	4.40	4.39	4.26	4.23	4.30	4.42	4.42	4.40	4.37	4.45	4.53	4.68	4.55	4.52	4.61	4.68	4.70	4.77	4.83	4.91
Other Deposits	2.57	2.43	0.94	0.89	0.96	1.18	0.79	0.67	0.71	0.65	0.58	0.58	3.28	2.78	2.70	1.39	2.96	2.01	2.65	1.24	1.95	1.05
Loans (2)	9.76	9.27	9.14	9.02	9.00	8.97	8.93	8.99	8.97	8.99	8.92	9.03	8.97	8.99	8.98	8.97	8.97	8.82	8.85	8.96	8.94	8.97
Overdraft	7.94	7.82	7.71	7.66	7.66	7.65	7.60	7.59	7.54	7.51	7.50	7.46	7.47	7.46	7.45	7.43	7.43	7.49	7.38	7.41	7.37	7.39
Credit Card	28.67	15.53	17.11	16.86	16.90	16.72	16.73	16.66	16.55	16.61	16.52	16.44	16.62	16.64	16.42	16.33	16.47	16.46	16.58	16.39	16.27	16.64
Term Loans	9.74	9.51	9.36	9.21	9.19	9.16	9.13	9.19	9.17	9.16	9.12	9.24	9.18	9.20	9.19	9.18	9.17	8.98	9.03	9.16	9.15	9.16
Other Loans	6.88	7.19	6.93	6.95	6.94	6.84	6.86	6.82	6.86	7.56	6.83	6.89	6.83	6.83	6.77	6.84	6.81	6.80	6.81	6.79	6.78	7.08

Including Commercial Banks and Specialized Banks

(1). Weighted average interest rate on deposits

(2). Weighted average interest rate on loans excluded bank placements.

**Revised Data*

Table 11: Central Bank Survey*

(In Billion KHR)

	May-22	Jun-22	Jul-22	Aug-22	Sep-22
Net Foreign Assets	77,356.4	75,852.8	74,112.2	71,345.8	68,985.5
Claims on Nonresidents	80,984.2	79,467.5	79,261.0	75,908.7	72,756.2
Liabilities to Nonresidents	-3,627.8	-3,614.6	-5,148.7	-4,563.0	-3,770.7
Claims on Other Depository Corporations	1,102.9	1,065.5	1,035.8	1,020.0	990.9
Net Claims on Central Government	-14,361.7	-14,542.2	-14,272.7	-13,840.4	-13,922.6
Claims on Central Government	0.0	0.0	0.0	0.0	0.0
Liabilities to Central Government	-14,361.7	-14,542.2	-14,272.7	-13,840.4	-13,922.6
Claims on Other Sectors	62.8	59.8	68.5	63.5	43.8
Claims on Other Financial Corporations	29.0	30.6	24.4	22.0	20.4
Claims on State and Local Government	0.0	0.0	0.0	0.0	0.0
Claims on Public Nonfinancial Corporations	0.0	0.0	0.0	0.0	0.0
Claims on Private Sector	33.8	29.2	44.1	41.5	23.4
Monetary Base	45,910.5	45,432.5	45,246.4	43,826.3	43,414.1
Currency in Circulation	16,282.3	15,767.2	15,818.7	15,830.3	16,140.1
Liabilities to Other Depository Corporations	29,593.6	29,633.5	29,388.1	27,971.7	27,251.2
Liabilities to Other Sectors	34.5	31.7	39.5	24.3	22.8
Other Liabilities to Other Depository Corporations	16,760.5	16,479.5	14,931.8	15,232.0	15,191.9
Deposits And Securities Other Than Shares Excl. Form Monetary Base	89.9	75.1	71.3	69.3	59.6
Deposits Included in Broad Money	0.0	0.0	0.0	0.0	0.0
Securities Other Than Shares Incl. in Broad Money	0.0	0.0	0.0	0.0	0.0
Deposits Excl. From Broad Money	46.4	47.7	48.0	48.1	44.7
Securities Other Than Shares Excl. From Broad Money	43.5	27.3	23.3	21.3	14.9
Loans	0.0	0.0	0.0	0.0	0.0
Financial Derivatives	0.0	0.0	0.0	0.0	0.0
Shares and Other Equity	3,319.0	2,450.0	2,678.3	1,460.8	-534.8
Other Items (Net)	-1,919.5	-2,001.1	-1,983.9	-1,999.7	-2,033.2
<i>IFS Vertical Check</i>	<i>0.0</i>	<i>0.0</i>	<i>0.0</i>	<i>0.0</i>	<i>0.0</i>

* Included only central bank

** Revised Data

Table 12: Other Depository Corporations Survey*

(In Billion KHR)

	May-22	Jun-22	Jul-22	Aug-22	Sep-22
Net Foreign Assets	-26,877.9	-28,120.0	-28,511.3	-28,368.9	-28,929.2
Claims on Nonresidents	18,740.4	17,874.8	18,671.8	18,918.6	19,004.4
Liabilities to Nonresidents	-45,618.3	-45,994.7	-47,183.1	-47,287.5	-47,933.6
Claims On Central Bank	46,421.9	46,067.2	44,670.6	43,606.5	42,979.5
Currency	2,015.7	1,911.5	1,956.7	1,987.9	2,144.1
Reserve Deposits and Securities Other Than Shares	44,377.8	44,130.5	42,692.0	41,600.1	40,819.3
Other Claims on Central Bank	28.4	25.2	21.9	18.5	16.0
Net Claims on Central Government	-6,827.7	-7,348.5	-7,471.8	-7,549.0	-7,555.2
Claims on Central Government	87.1	97.6	113.4	125.6	180.1
Liabilities to Central Government	-6,914.8	-7,446.1	-7,585.2	-7,674.5	-7,735.4
Claims on Other Sectors	203,143.1	207,130.0	210,211.1	213,256.0	216,835.9
Claims on Other Financial Corporations	4,825.6	5,042.0	5,009.3	4,922.4	5,131.1
Claims on State and Local Government	0.0	0.0	0.0	0.0	0.0
Claims on Public Nonfinancial Corporations	0.8	0.8	0.8	0.8	0.7
Claims on Private Sector	198,316.6	202,087.3	205,201.0	208,332.8	211,704.1
Liabilities to Central Bank	3,107.0	3,265.9	3,260.9	3,363.7	3,397.9
Transferable Deposits Incl. in Broad Money	30,571.7	30,213.5	28,455.8	28,848.8	28,721.7
Other Deposits Incl. in Broad Money	121,329.5	123,011.4	124,611.5	125,519.4	126,663.2
Securities Other Than Shares Incl. in Broad Money	0.0	0.0	0.0	0.0	0.0
Deposits Excl. From Broad Money	231.1	194.5	172.6	241.7	270.2
Securities Other Than Shares Excl. From Broad Money	0.0	0.0	0.0	0.0	0.0
Loans	1,925.7	1,925.1	1,949.3	1,880.0	1,876.9
Financial Derivatives	0.0	0.0	0.0	0.0	0.0
Shares and Other Equity	54,362.1	54,790.3	55,384.7	55,909.0	56,704.5
Other Items (Net)	4,332.3	4,328.1	5,063.8	5,181.9	5,696.5
<i>IFS Vertical Check</i>	<i>0.0</i>	<i>0.0</i>	<i>0.0</i>	<i>0.0</i>	<i>0.0</i>

* Included commercial banks and MDIs

** Revised Data

Table 13: Depository Corporations Survey*

(In Billion KHR)

	May-22	Jun-22	Jul-22	Aug-22	Sep-22
Net Foreign Assets	50,478.4	47,732.9	45,600.9	42,976.9	40,056.3
Claims on Nonresidents	99,724.5	97,342.2	97,932.8	94,827.3	91,760.6
Liabilities to Nonresidents	-49,246.1	-49,609.3	-52,331.9	-51,850.4	-51,704.3
Domestic Claims	182,016.5	185,299.1	188,535.0	191,930.1	195,401.8
Net Claims on Central Government	-21,189.3	-21,890.8	-21,744.5	-21,389.4	-21,477.8
Claims on Central Government	87.1	97.6	113.4	125.6	180.1
Liabilities to Central Government	-21,276.4	-21,988.4	-21,857.9	-21,515.0	-21,658.0
Claims on Other Sectors	203,205.8	207,189.9	210,279.5	213,319.4	216,879.6
Claims on Other Financial Corporations	4,854.6	5,072.5	5,033.7	4,944.4	5,151.4
Claims on State and Local Government	0.0	0.0	0.0	0.0	0.0
Claims on Public Nonfinancial Corporations	0.8	0.8	0.8	0.8	0.7
Claims on Private Sector	198,350.4	202,116.5	205,245.1	208,374.3	211,727.5
Broad Money Liabilities (M2)	166,202.4	167,112.2	166,968.8	168,235.0	169,403.6
Currency Outside Depository Corporations	14,266.7	13,855.6	13,862.1	13,842.4	13,996.0
Transferable Deposits	30,587.7	30,226.6	28,476.6	28,854.6	28,726.0
Other Deposits	121,348.1	123,030.0	124,630.2	125,538.0	126,681.7
Securities Other Than Shares	0.0	0.0	0.0	0.0	0.0
<i>of which Foreign Currency (of M2)</i>	<i>139,390.6</i>	<i>140,511.5</i>	<i>139,976.2</i>	<i>140,802.2</i>	<i>141,427.3</i>
Deposits Excl. From Broad Money	277.4	242.2	220.6	289.8	314.9
Securities Other Than Shares Excl. From Broad Money	43.5	27.3	23.3	21.3	14.9
Loans	1,925.7	1,925.1	1,949.3	1,880.0	1,876.9
Financial Derivative	0.0	0.0	0.0	0.0	0.0
Shares and Other Equity	57,681.1	57,240.3	58,063.0	57,369.8	56,169.7
Other Items (Net)	6,364.8	6,484.8	6,910.9	7,111.0	7,678.0
<i>IFS Vertical Check</i>	<i>0.0</i>	<i>0.0</i>	<i>0.0</i>	<i>0.0</i>	<i>0.0</i>

* Included data of central bank and other depository corporations(ODCs)

** Revised Data

Table 14: Other Financial Corporations Survey*

(In Billion KHR)

	May-22	Jun-22	Jul-22	Aug-22	Sep-22
Net Foreign Assets	-1,001.0	-998.9	-1,010.8	-1,055.5	-1,132.0
Claims on Nonresidents	442.3	468.1	446.3	447.0	448.3
Liabilities to Nonresidents	-1,443.3	-1,467.0	-1,457.1	-1,502.5	-1,580.3
Claims on Depository Corporations	3,932.7	4,176.6	4,108.2	4,142.2	4,337.8
Net Claims on Central Government	-17.0	-17.0	-18.1	-19.0	-21.3
Claims on Central Government	0.6	0.7	0.9	1.0	1.1
Liabilities to Central Government	-17.7	-17.7	-18.9	-20.0	-22.4
Claims on Other Sectors	6,680.0	6,740.9	6,970.3	7,001.3	7,469.8
Claims on State and Local Government	0.0	0.0	0.0	0.0	0.0
Claims on Public Nonfinancial Corporations	37.3	51.0	51.0	51.0	51.7
Claims on Private Sector	6,642.7	6,689.9	6,919.2	6,950.3	7,418.1
Deposit	37.2	36.7	32.1	30.4	30.1
Securities Other Than Shares	0.0	6.1	6.1	6.1	6.2
Loans	3,435.3	3,598.4	3,727.7	3,738.0	4,040.9
Financial Derivatives	0.0	0.0	0.0	0.0	0.0
Shares and Other Equity	4,715.8	4,790.4	4,723.5	4,734.1	4,936.6
Other Items (Net)	-187.6	-216.3	-126.3	-126.0	-119.4
<i>IFS Vertical Check</i>	<i>0.0</i>	<i>0.0</i>	<i>0.0</i>	<i>0.0</i>	<i>0.0</i>

* Included only specialized banks from Dec-13 to Dec-20. From Jan-21 to present, OFCs included Specialized Banks, MFIs and Insurance Companies.

** Revised Data

Table 15: Financial Corporations Survey*

(In Billion KHR)

	May-22	Jun-22	Jul-22	Aug-22	Sep-22
Net Foreign Assets	49,477.4	46,734.0	44,590.1	41,921.4	38,924.3
Claims on Nonresidents	100,166.8	97,810.3	98,379.1	95,274.3	92,208.9
Liabilities to Nonresidents	-50,689.4	-51,076.3	-53,789.0	-53,352.9	-53,284.6
Domestic Claims	183,824.8	186,950.5	190,453.5	193,967.9	197,698.9
Net Claims on Central Government	-21,206.4	-21,907.8	-21,762.6	-21,408.4	-21,499.1
Claims on Central Government	87.7	98.3	114.2	126.6	181.2
Liabilities to Central Government	-21,294.1	-22,006.1	-21,876.8	-21,535.0	-21,680.3
Claims on Other Sectors	205,031.2	208,858.3	212,216.1	215,376.3	219,198.0
Claims on State and Local Government	0.0	0.0	0.0	0.0	0.0
Claims on Public Nonfinancial Corporations	38.1	51.8	51.8	51.8	52.5
Claims on Private Sector	204,993.1	208,806.5	212,164.3	215,324.6	219,145.6
Currency Outside Financial Corporations	14,256.2	13,844.3	13,852.5	13,832.5	13,986.3
Deposits	149,694.1	150,983.2	150,808.1	152,138.0	153,161.5
Securities Other Than Shares	0.0	0.0	0.0	0.0	0.0
Loans	5,215.3	5,373.6	5,536.5	5,465.0	5,759.3
Financial Derivatives	0.0	0.0	0.0	0.0	0.0
Shares and Other Equity	62,397.0	62,030.6	62,786.4	62,104.0	61,106.3
Other Items (Net)	145.7	-233.6	373.6	663.3	849.8
<i>IFS Vertical Check</i>	<i>0.0</i>	<i>0.0</i>	<i>0.0</i>	<i>0.0</i>	<i>0.0</i>

* Included data of depository corporations and other financial corporations

** Revised Data

Chart 8: Financial Corporations Survey

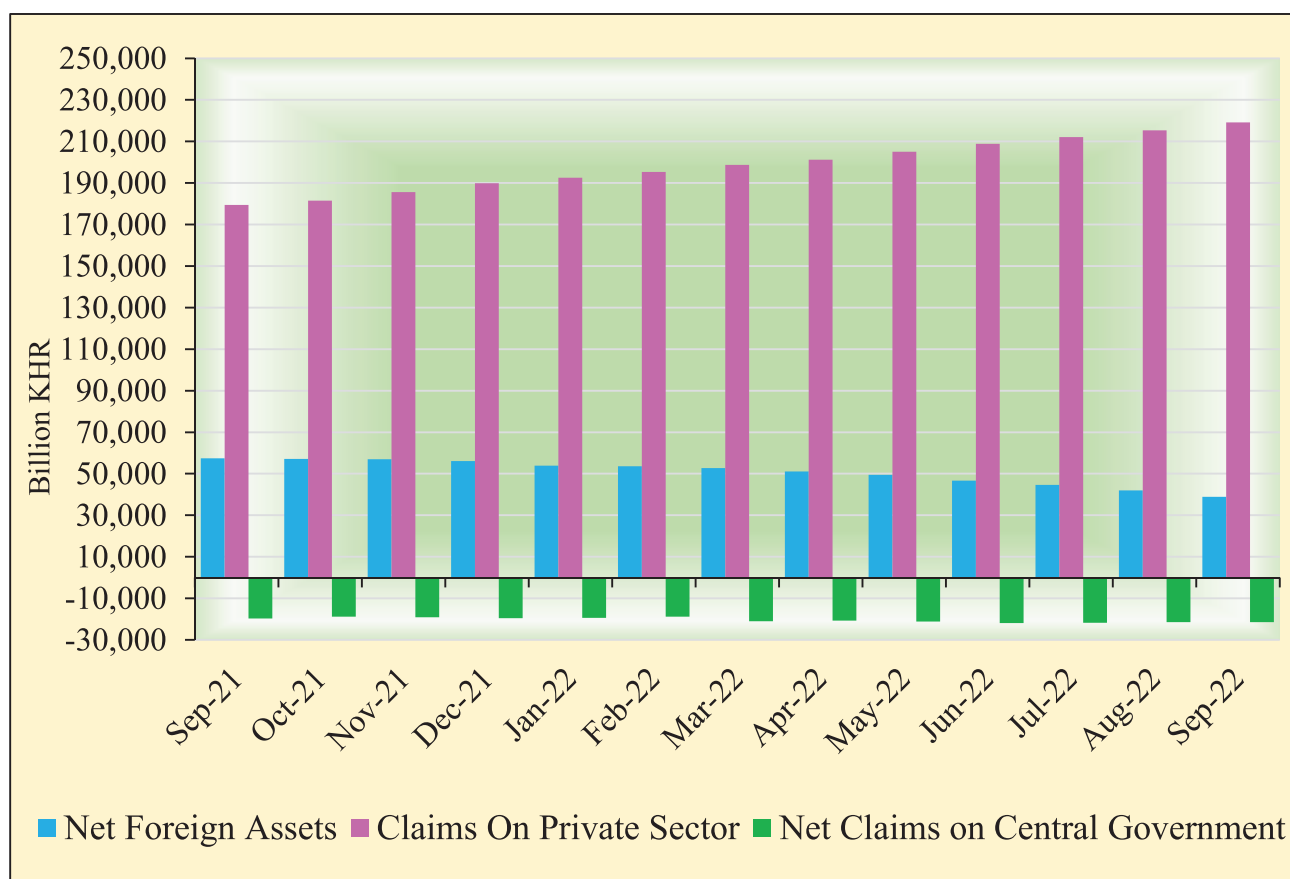


Chart 9: Monetary Aggregates Components

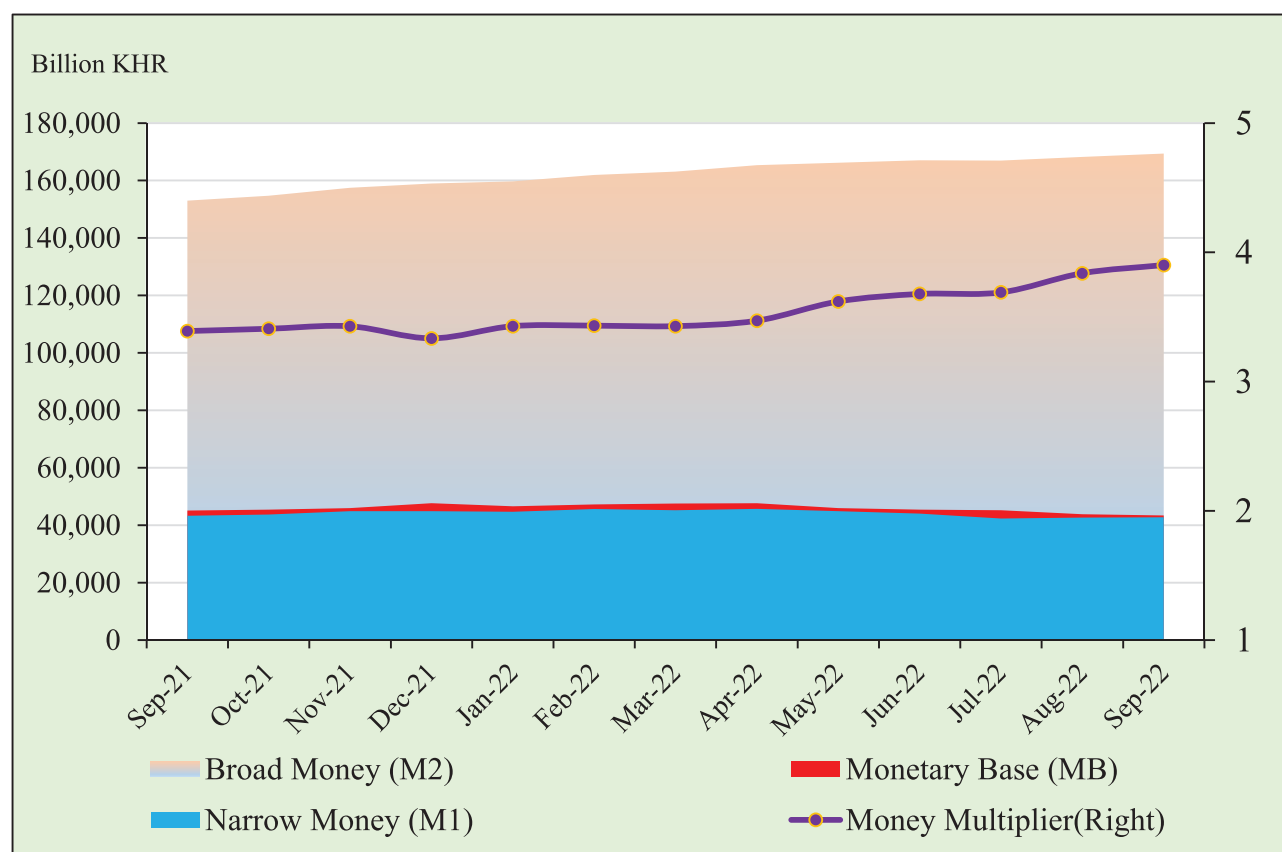


Table 16: Credit Granted by Banking Institutions Classified by Industry

(In Billion KHR)

	May-22	Jun-22	Jul-22	Aug-22	Sep-22
1. Financial Institutions	7,845.2	7,854.3	7,985.0	8,221.0	8,236.4
1.1. National Bank of Cambodia	0.0	0.0	0.0	0.0	0.0
1.2. Depository Institutions	5,793.4	5,774.8	5,841.8	6,093.9	6,078.5
1.3. Other Financial Institutions	2,051.9	2,079.5	2,143.2	2,127.1	2,157.9
2. Non-Financial Institutions	126,495.8	128,971.0	131,802.2	133,834.3	135,658.5
2.1. Agriculture, Forestry and Fishing	13,868.1	13,944.9	14,495.2	14,939.0	15,081.4
2.2. Mining and Quarrying	888.6	937.8	979.1	1,011.9	1,023.1
2.3. Manufacturing	6,772.9	7,202.1	7,408.3	7,631.2	7,690.9
2.4. Utilities	1,713.9	1,833.1	1,942.9	1,934.0	1,918.7
2.5. Construction	16,424.9	16,773.0	16,863.2	17,162.7	17,543.9
2.6. Wholesale Trade	16,987.5	17,065.5	17,366.6	17,678.8	18,008.7
2.7. Retail Trade	27,565.4	28,146.8	29,084.6	29,566.1	30,060.4
2.8. Hotels and Restaurants	7,827.2	7,865.4	7,860.7	8,038.7	8,240.7
2.9. Transport and Storage	4,646.9	4,763.8	4,859.2	4,889.9	4,925.4
2.10. Information Media and Telecommunications	1,077.2	1,009.4	1,029.0	1,009.5	1,060.4
2.11. Rental and Operational Leasing Activities, Excluding Real Estate Leasing and Rentals	2,722.5	2,753.9	2,764.2	2,802.9	2,780.3
2.12. Real Estate Activities	16,447.2	16,913.9	17,196.7	17,189.3	17,217.7
2.13. Other Non-Financial Services	9,553.4	9,761.4	9,952.5	9,980.2	10,106.7
3. Personal Essentials	40,352.3	41,178.7	40,820.1	41,658.1	42,518.6
3.1. Personal Lending	15,717.7	16,007.5	14,942.2	15,516.4	15,608.3
3.2. Credit Cards	401.7	416.1	432.6	449.7	470.0
3.3. Mortgages, Owner-Occupied Housing only	24,232.9	24,755.1	25,445.3	25,692.0	26,440.2
4. Other Lending	2,213.6	2,285.8	2,387.8	2,386.9	2,436.5
Total Gross Loan	176,906.9	180,289.8	182,995.1	186,100.4	188,850.0

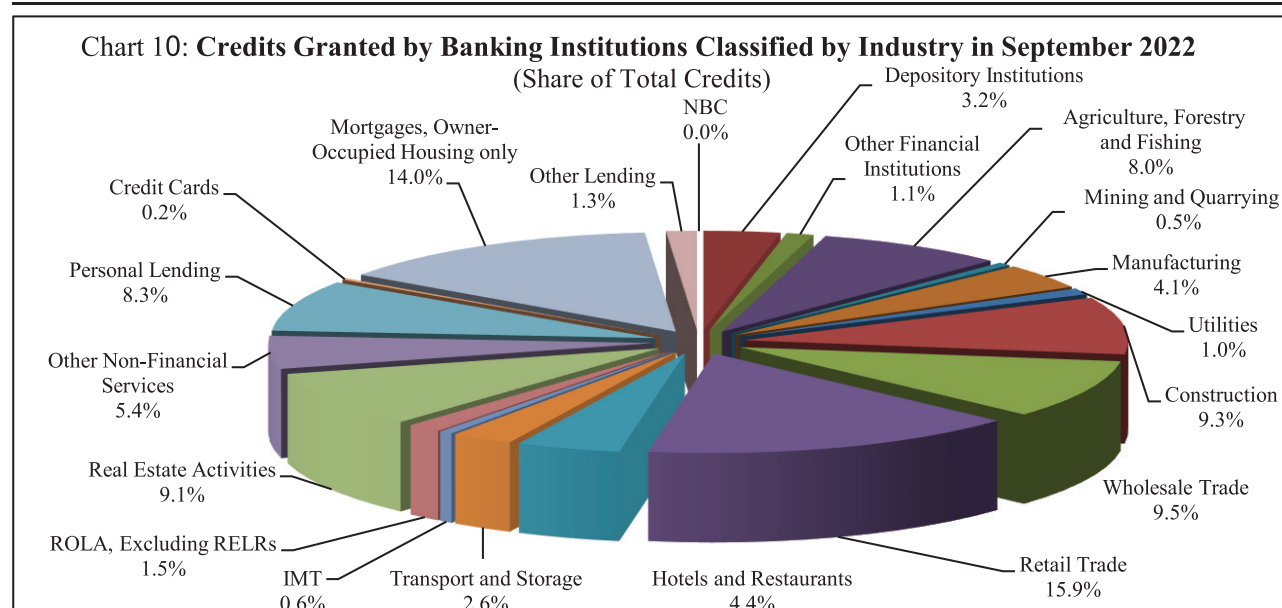


Table 17: Monthly Change of Credit Granted by Banking Institutions Classified by Industry

	May-22	Jun-22	Jul-22	Aug-22	Sep-22
(Monthly Change in Billion KHR)					
1. Financial Institutions	363.1	9.1	130.7	236.0	15.4
1.1. National Bank of Cambodia	0.0	0.0	0.0	0.0	0.0
1.2. Depository Institutions	247.9	-18.6	67.1	252.1	-15.4
1.3. Other Financial Institutions	115.2	27.7	63.7	-16.1	30.8
2. Non-Financial Institutions	2,592.9	2,475.2	2,831.2	2,032.1	1,824.2
2.1. Agriculture, Forestry and Fishing	214.1	76.8	550.3	443.8	142.4
2.2. Mining and Quarrying	13.1	49.2	41.2	32.8	11.2
2.3. Manufacturing	13.1	429.2	206.2	222.9	59.7
2.4. Utilities	-438.8	119.1	109.8	-8.8	-15.3
2.5. Construction	351.4	348.1	90.2	299.5	381.2
2.6. Wholesale Trade	866.1	78.0	301.2	312.2	329.9
2.7. Retail Trade	154.8	581.4	937.7	481.6	494.3
2.8. Hotels and Restaurants	218.9	38.2	-4.7	178.0	202.1
2.9. Transport and Storage	87.0	116.9	95.4	30.7	35.5
2.10. Information Media and Telecommunications	-32.9	-67.8	19.6	-19.5	51.0
2.11. Rental and Operational Leasing Activities, Excluding Real Estate Leasing and Rentals	403.6	31.4	10.4	38.7	-22.6
2.12. Real Estate Activities	168.2	466.7	282.8	-7.4	28.5
2.13. Other Non-Financial Services	574.4	208.0	191.2	27.7	126.5
3. Personal Essentials	648.0	826.4	-358.7	838.1	860.5
3.1. Personal Lending	226.3	289.8	-1,065.3	574.3	91.9
3.2. Credit Cards	20.1	14.4	16.5	17.0	20.4
3.3. Mortgages, Owner-Occupied Housing only	401.5	522.2	690.1	246.8	748.2
4. Other Lending	-46.4	72.2	102.0	-0.9	49.6
Total Gross Loan	3,557.6	3,382.9	2,705.3	3,105.3	2,749.6
(Monthly Change in Percent)					
1. Financial Institutions	4.9	0.1	1.7	3.0	0.2
1.1. National Bank of Cambodia	0.0	0.0	0.0	0.0	0.0
1.2. Depository Institutions	4.5	-0.3	1.2	4.3	-0.3
1.3. Other Financial Institutions	5.9	1.3	3.1	-0.8	1.4
2. Non-Financial Institutions	2.1	2.0	2.2	1.5	1.4
2.1. Agriculture, Forestry and Fishing	1.6	0.6	3.9	3.1	1.0
2.2. Mining and Quarrying	1.5	5.5	4.4	3.4	1.1
2.3. Manufacturing	0.2	6.3	2.9	3.0	0.8
2.4. Utilities	-20.4	7.0	6.0	-0.5	-0.8
2.5. Construction	2.2	2.1	0.5	1.8	2.2
2.6. Wholesale Trade	5.4	0.5	1.8	1.8	1.9
2.7. Retail Trade	0.6	2.1	3.3	1.7	1.7
2.8. Hotels and Restaurants	2.9	0.5	-0.1	2.3	2.5
2.9. Transport and Storage	1.9	2.5	2.0	0.6	0.7
2.10. Information Media and Telecommunications	-3.0	-6.3	1.9	-1.9	5.0
2.11. Rental and Operational Leasing Activities, Excluded Real Estate Leasing and Rentals	17.4	1.2	0.4	1.4	-0.8
2.12. Real Estate Activities	1.0	2.8	1.7	0.0	0.2
2.13. Other Non-Financial Services	6.4	2.2	2.0	0.3	1.3
3. Personal Essentials	1.6	2.0	-0.9	2.1	2.1
3.1. Personal Lending	1.5	1.8	-6.7	3.8	0.6
3.2. Credit Cards	5.3	3.6	4.0	3.9	4.5
3.3. Mortgages, Owner-Occupied Housing only	1.7	2.2	2.8	1.0	2.9
4. Other Lending	-2.1	3.3	4.5	0.0	2.1
Total Gross Loan	2.1	1.9	1.5	1.7	1.5

Table 18: Deposits with Deposit Money Banks

(In Billion KHR)

	May-22	Jun-22	Jul-22	Aug-22	Sep-22
Deposits in KHR					
Demand deposits	4,206.8	4,104.6	4,208.7	4,100.0	4,138.9
Savings deposits	2,748.3	2,927.6	3,114.6	3,069.6	3,210.0
Fixed deposits	6,860.2	7,321.6	7,526.7	7,970.2	8,261.3
Others	240.5	182.4	203.9	336.9	228.3
Total	14,055.7	14,536.2	15,053.9	15,476.6	15,838.5
Deposits in Foreign Currency*					
Demand deposits	30,245.3	30,243.4	28,526.2	28,725.5	28,483.9
Savings deposits	41,567.8	41,721.1	41,091.6	40,792.6	40,184.8
Fixed deposits	61,637.3	62,509.6	63,875.1	64,646.9	65,979.2
Others	1,747.2	1,732.8	1,799.0	1,758.6	1,944.6
Total	135,197.5	136,206.9	135,291.9	135,923.6	136,592.5
Grand Total	149,253.3	150,743.1	150,345.8	151,400.2	152,431.0

* Deposits in foreign currency include deposits of Cambodian residents and non-residents

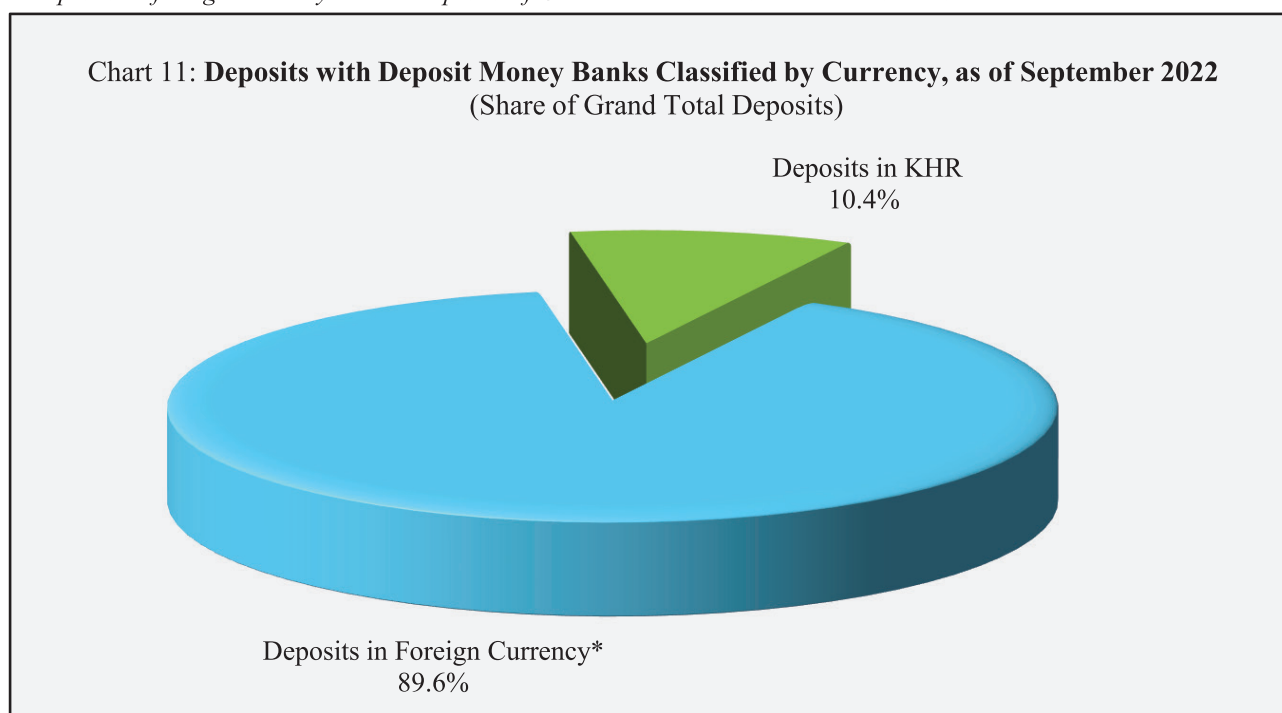


Table 19: Monthly Change of Deposits with Deposit Money Banks

	May-22	Jun-22	Jul-22	Aug-22	Sep-22
(Change in Billion KHR)					
Deposits in KHR					
Demand deposits	34.8	-102.2	104.1	-108.7	38.9
Savings deposits	-127.1	179.3	187.0	-45.0	140.4
Fixed deposits	209.2	461.4	205.1	443.5	291.1
Others	26.1	-58.1	21.5	133.0	-108.7
Total	143.0	480.4	517.7	422.8	361.8
Deposits in Foreign Currency					
Demand deposits	-291.1	-1.9	-1,717.1	199.2	-241.5
Savings deposits	-227.7	153.3	-629.6	-298.9	-607.9
Fixed deposits	1,361.9	872.4	1,365.5	771.8	1,332.3
Others	-0.6	-14.4	66.2	-40.4	186.0
Total	842.5	1,009.3	-915.0	631.7	668.9
Grand Total	985.5	1,489.8	-397.3	1,054.4	1,030.7
(Percentage Change)					
Deposits in KHR					
Demand deposits	0.8	-2.4	2.5	-2.6	0.9
Savings deposits	-4.4	6.5	6.4	-1.4	4.6
Fixed deposits	3.1	6.7	2.8	5.9	3.7
Others	12.2	-24.2	11.8	65.2	-32.2
Total	1.0	3.4	3.6	2.8	2.3
Deposits in Foreign Currency					
Demand deposits	-1.0	0.0	-5.7	0.7	-0.8
Savings deposits	-0.5	0.4	-1.5	-0.7	-1.5
Fixed deposits	2.3	1.4	2.2	1.2	2.1
Others	0.0	-0.8	3.8	-2.2	10.6
Total	0.6	0.7	-0.7	0.5	0.5
Grand Total	0.7	1.0	-0.3	0.7	0.7

Chart 12: Deposits in KHR Classified by Type, as of September 2022

(Share of Total KHR Deposits)

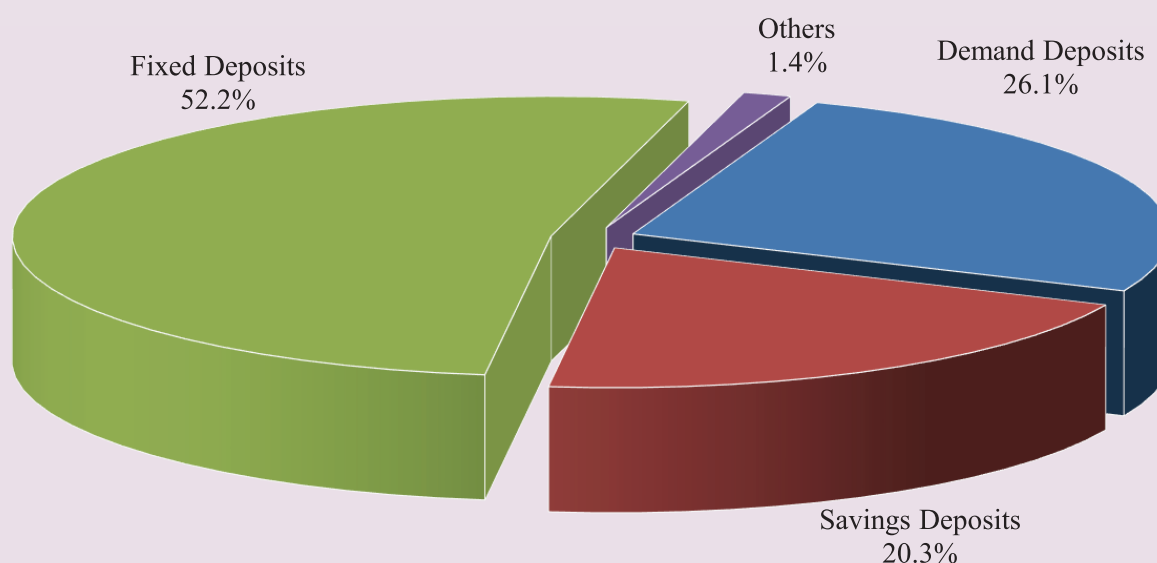


Chart 13: Deposits in Foreign Currency Classified by Type, as of September 2022

(Share of Total Foreign Currency Deposits)

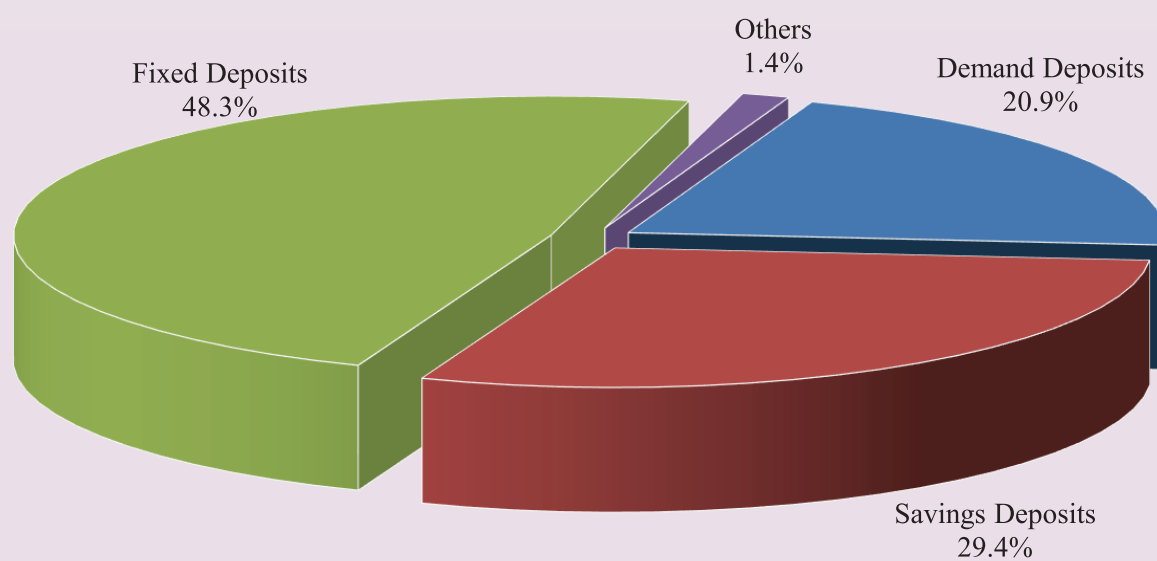


Table 20: Credit Granted by Micro-Finance Institutions*

Period	Numbers of				Loan Outstanding (In Billion KHR)	Interest Rate	
	District	Commune	Village	Household		Monthly	Annually
Dec-13	2,282	16,384	89,829	1,610,844	5,364	2% - 3%	27%-39%
Dec-14	2,754	18,254	107,964	1,844,893	8,340	2% - 3%	27%-39%
Dec-15	4,576	27,510	141,514	2,149,180	12,365	2% - 4%	25%-41%
Dec-16	5,971	32,599	155,499	2,129,907	12,954	2% - 4%	25%-41%
2017*	Numbers of Branches				Loan Outstanding (In Billion KHR)	Interest Rate	
	Head Office	Province/ Krong	District/Khan	Number of Borrowers**		Monthly	Annually
Dec-17	76	366	975	1,776,467	17,236	1.4%-2.5%	16.9%-28.8%
Dec-18	80	399	944	1,872,916	21,813	1.2%-2.0%	15.1%-24.0%
Dec-19	82	406	965	2,109,170	29,357	1.1%-1.6%	13.4%-18.7%
2020							
Nov	79	343	749	1,920,962	27,189	1.1%-1.6%	13.4%-18.4%
Dec	79	343	749	1,919,926	27,527	1.1%-1.6%	13.4%-18.3%
2021							
Jan	79	346	751	1,930,946	28,577	1.1%-1.5%	13.2%-17.5%
Feb	79	343	752	1,939,158	29,332	1.1%-1.5%	13.3%-17.6%
Mar	79	344	752	1,940,901	29,457	1.1%-1.5%	13.3%-17.6%
Apr	79	344	756	1,940,753	29,552	1.1%-1.5%	13.5%-17.9%
May	78	344	756	1,946,445	30,046	1.1%-1.5%	13.4%-17.9%
Jun	78	345	757	1,959,636	30,790	1.1%-1.5%	13.2%-17.6%
Jul	78	358	762	1,977,478	31,515	1.1%-1.5%	13.4%-17.9%
Aug	78	357	761	1,998,367	32,489	1.1%-1.5%	13.4%-17.9%
Sep	78	357	764	2,027,766	33,418	1.1%-1.5%	13.3%-17.8%
Oct	78	358	765	2,038,580	34,010	1.1%-1.5%	13.3%-17.8%
Nov	77	328	658	1,883,921	31,368	1.1%-1.5%	13.3%-17.7%
Dec	77	325	664	1,897,878	31,723	1.1%-1.5%	13.3%-17.6%
2022							
Jan	77	325	665	1,910,865	32,607	1.1%-1.5%	12.9%-17.4%
Feb	78	329	662	1,923,101	33,213	1.1%-1.4%	12.8%-17.4%
Mar	79	324	665	1,942,327	33,851	1.1%-1.4%	12.9%-17.2%
Apr	81	326	668	1,960,196	34,333	1.1%-1.4%	12.9%-17.2%
May	84	334	671	1,983,181	34,976	1.1%-1.4%	13.0%-17.3%
Jun	85	336	671	2,027,069	35,730	1.1%-1.4%	12.9%-17.3%
Jul	85	337	672	2,046,509	36,477	1.1%-1.4%	13.1%-17.3%
Aug	85	339	678	2,070,163	37,189	1.1%-1.4%	13.2%-17.3%
Sep	85	340	678	2,093,002	37,725	1.1%-1.4%	13.0%-17.3%

* Including MFI and MDI

** Including Individuals and Legal Entities

*** Revised Data

Table 21: KHR-Denominated Checks Clearing through Clearing House

Date	Number of Cleared Check	Number of Working Day	Number of Cleared Check Per Day	Total Amount (In Billion KHR)	Daily Average Amount (In Billion KHR)	Returned Check	
						Number	Amount (In Billion KHR)
	1	2	3 = 1/2	4	5 = 4/2	6	7
Dec-16	3,938	22	179	490.0	22.3	13	3.15
Total	82,291	242	340	5,421.8	22.4	186	117.50
Dec-17	3,074	20	154	599.0	30.0	22	12.48
Total	37,485	239	1,885	6,607.8	333.1	138	28.51
Dec-18	2,994	19	158	935.1	49.2	16	6.58
Total	38,249	232	165	9,424.1	40.6	197	152.90
Dec-19	3,734	21	178	1,584.1	75.4	18	11.33
Total	41,696	236	177	13,602.7	57.6	206	630.84
2020							
Oct	2,956	19	156	1,477.2	77.7	10	0.39
Nov	2,813	19	148	1,473.6	77.6	6	6.84
Dec	3,264	23	142	1,839.6	80.0	5	0.57
Total	35,570	240	148	22,955.3	95.6	101	5,074.92
2021							
Jan	2,703	19	142	1,464.0	77.1	4	1.13
Feb	2,747	20	137	1,223.1	61.2	7	5.32
Mar	3,209	22	146	2,137.0	97.1	8	1.25
Apr	1,722	17	101	1,446.2	85.1	12	343.49
May	2,616	20	131	1,677.9	83.9	6	2.51
Jun	2,676	21	127	1,673.9	79.7	7	63.13
Jul	2,501	22	114	1,548.8	70.4	4	0.98
Aug	2,717	22	124	1,600.4	72.7	7	1.20
Sep	2,636	21	126	1,488.4	70.9	7	18.26
Oct	2,421	16	151	1,433.5	89.6	7	1.23
Nov	2,773	19	146	1,633.4	86.0	16	1.07
Dec	3,028	23	132	1,763.0	76.7	14	26.86
Total	31,749	242	131	19,089.4	78.9	99	466.43
2022							
Jan	2,611	20	131	1,592.1	79.6	8	4.19
Feb	2,695	20	135	1,441.0	72.0	7	3.93
Mar	2,970	22	135	1,760.9	80.0	7	4.08
Apr	2,637	19	139	1,567.7	82.5	4	0.73
May	2,908	21	138	1,605.0	76.4	5	59.83
Jun	2,813	22	128	1,770.1	80.5	6	0.39
Jul	2,726	21	130	1,448.2	69.0	5	0.30
Aug	2,996	23	130	1,758.5	76.5	3	0.13
Sep	2,654	21	126	1,421.7	67.7	6	12.03
Total	25,010	189	132	14,365.0	76.0	51	85.61

Table 22: USD-Denominated Checks Clearing through Clearing House

Date	Number of Checks Cleared	Number of days Cleared	Number of Cleared Check per Day	Total Amount (In Million USD)	Daily Average Amount (In Million USD)	Returned Checks	
						Number	Amount (In Million USD)
	1	2	3 = 1/2	4	5 = 4/2	6	7
Dec-16	92,820	22	4,219	2,220.4	100.9	778	44.8
Total	1,025,209	242	4,236	21,790.4	90.0	8,738	439.6
Dec-17	101,093	20	5,055	2,824.6	141.2	789	37.6
Total	1,107,752	239	4,635	26,812.7	112.2	8,863	440.4
Dec-18	111,978	19	5,894	3,917.1	206.2	904	63.6
Total	1,238,232	232	5,337	41,462.7	178.7	10,474	2686.1
Dec-19	121,353	21	5,779	4,448.5	211.8	964	87.1
Total	1,337,800	236	5,669	51,609.1	218.7	10,654	3779.9
2020							
Oct	95,528	19	5,028	3,337.8	175.7	616	38.0
Nov	101,894	19	5,363	3,401.5	179.0	825	49.8
Dec	111,749	23	4,859	4,369.7	190.0	714	45.0
Total	1,200,110	240	5,000	50,220.0	209.3	8,620	8737.8
2021							
Jan	94,741	19	4,986	3,472.2	182.7	651	34.0
Feb	91,093	20	4,555	3,581.1	179.1	559	64.9
Mar	108,132	22	4,915	4,580.6	208.2	713	29.8
Apr	51,038	17	3,002	2,481.7	146.0	653	25.0
May	83,885	20	4,194	3,665.8	183.3	727	35.9
Jun	92,036	21	4,383	4,019.5	191.4	651	33.8
Jul	90,348	22	4,107	4,022.5	182.8	610	74.4
Aug	94,597	22	4,300	3,831.2	174.1	699	40.4
Sep	92,152	21	4,388	4,057.2	193.2	546	25.0
Oct	78,639	16	4,915	3,575.0	223.4	592	30.2
Nov	95,777	19	5,041	4,091.7	215.4	1,350	59.2
Dec	104,666	23	4,551	5,002.1	217.5	672	65.5
Total	1,077,104	242	4,451	46,380.6	191.7	8,423	517.9
2022							
Jan	90,249	20	4,512	4,464.2	223.2	622	47.1
Feb	80,304	20	4,015	3,814.0	190.7	631	60.1
Mar	103,504	22	4,705	5,036.6	228.9	803	64.1
Apr	84,496	19	4,447	4,309.2	226.8	605	32.3
May	97,990	21	4,666	4,805.0	228.8	690	56.4
Jun	95,250	22	4,330	4,763.2	216.5	678	92.0
Jul	92,323	21	4,396	4,874.0	232.1	643	47.6
Aug	100,482	23	4,369	4,507.6	196.0	771	64.5
Sep	87,331	21	4,159	4,301.1	204.8	705	73.3
Total	831,929	189	4,402	40,874.9	216.3	6,148	537.4

Table 23: Visitor Arrivals in Cambodia

	2022			% of Total		% Change	
	Jul	Aug	Sep	Aug	Sep	Aug/Jul	Sep/Aug
(Mode of Arrival)							
Phnom Penh International Airport	60,692	62,415	56,334	24.5	21.1	2.8	-9.7
Kong Keng International Airport	2,074	2,259	1,741	0.9	0.7	8.9	-22.9
Siem Reap International Airport	12,918	15,596	14,223	6.1	5.3	20.7	-8.8
Land	159,996	173,155	193,914	68.0	72.5	8.2	12.0
Boat	1,017	1,388	1,288	0.5	0.5	36.5	-7.2
Preah Vihea	0	0	0	0.0	0.0	0.0	0.0
Total	236,697	254,813	267,500	100.0	100.0	7.7	5.0
(Arrival by Purpose of Visit)							
Tourist	185,349	200,216	213,263	78.6	79.7	8.0	6.5
Business and Professional	41,867	47,320	48,082	18.6	18.0	13.0	1.6
Others and not specified	9,481	7,277	6,155	2.9	2.3	-23.2	-15.4
Total	236,697	254,813	267,500	100.0	100.0	7.7	5.0
(Top-Ten Countries of Passenger Arrivals)							
Thailand	103,999	110,229	114,045	43.3	42.6	6.0	3.5
Vietnam	46,543	45,764	49,617	18.0	18.5	-1.7	8.4
Lao PDR	4,234	11,089	21,315	4.4	8.0	1.6*	92.2
China (PRC)	10,667	9,899	11,105	3.9	4.2	-7.2	12.2
Indonesia	5,685	11,809	10,744	4.6	4.0	1.1*	-9.0
United States of America	9,138	7,362	7,523	2.9	2.8	-19.4	2.2
South Korea	6,794	6,779	6,599	2.7	2.5	-0.2	-2.7
Malaysia	7,164	6,038	5,744	2.4	2.1	-15.7	-4.9
India	2,739	3,502	3,979	1.4	1.5	27.9	13.6
Japan	2,512	3,776	3,434	1.5	1.3	50.3	-9.1
Others	37,222	38,566	33,395	15.1	12.5	3.6	-13.4
Total	236,697	254,813	267,500	100.0	100.0	7.7	5.0

Source: Ministry of Tourism

* Increased in times, not in percentage (%).

Table 24: Cambodia's Imports and Exports

(In Billion KHR)

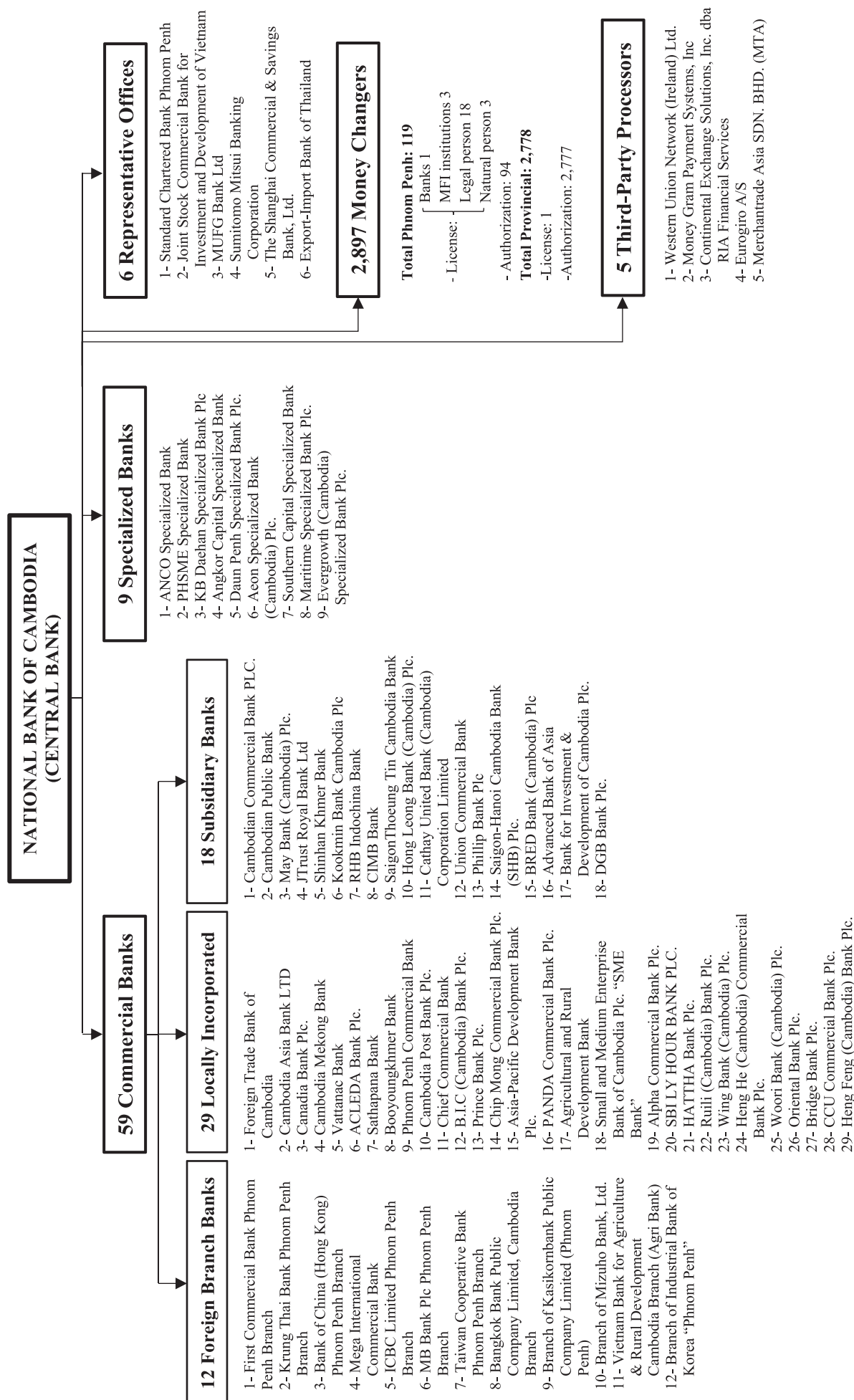
	2022			Change in Billion KHR		Change in %	
	Jul	Aug	Sep	Aug/Jul	Sep/Aug	Aug/Jul	Sep/Aug
Imports by Commodity							
Medicine	96.2	117.4	107.6	21.2	-9.8	22.1	-8.3
Cigarette	94.9	133.0	50.3	38.1	-82.8	40.2	-62.2
Food and Beverage	338.2	329.2	291.6	-9.0	-37.6	-2.7	-11.4
Equipment Construction	338.9	261.8	213.9	-77.1	-47.9	-22.8	-18.3
Cement	7.6	5.5	5.4	-2.1	-0.1	-28.0	-1.7
Steel	120.4	121.0	111.2	0.6	-9.8	0.5	-8.1
Phones	3.4	12.3	12.1	8.9	-0.2	260.9	-1.7
T.V	3.2	1.7	3.1	-1.5	1.4	-47.2	82.5
Other Electronic Equipment	116.1	96.2	100.5	-20.0	4.4	-17.2	4.5
Garment	186.1	180.3	168.1	-5.8	-12.2	-3.1	-6.7
Fabric	1,702.7	1,706.9	1,300.4	4.2	-406.6	0.2	-23.8
Vehicle	556.6	847.8	717.0	291.2	-130.8	52.3	-15.4
Equipment of Cold	19.0	18.9	14.9	0.0	-4.0	-0.2	-21.4
Gold	3,824.4	2,012.1	499.7	-1,812.3	-1,512.4	-47.4	-75.2
Oil	1399.9	1173.1	1212.2	-226.8	39.1	-16.2	3.3
Fertilizer	62.6	82.8	79.4	20.2	-3.4	32.3	-4.2
Others	4,140.1	4,022.3	3,339.0	-117.7	-683.3	-2.8	-17.0
Total Imports	13,010.5	11,122.5	8,226.5	-1,888.0	-2,896.0	-14.5	-26.0
Exports by Commodity							
Garment	4,533.2	3,480.1	2,910.6	-1,053.1	-569.4	-23.2	-16.4
Footwear	811.5	564.1	583.6	-247.4	19.4	-30.5	3.4
Other Textile Product	976.6	656.5	623.4	-320.1	-33.1	-32.8	-5.0
Electrical Part	540.4	500.6	653.7	-39.9	153.2	-7.4	30.6
Vehicle and Bicycle Part	49.1	61.6	61.1	12.4	-0.4	25.3	-0.7
Bicycle	362.6	398.3	325.1	35.6	-73.1	9.8	-18.4
Wood Products	122.2	123.6	99.5	1.4	-24.1	1.2	-19.5
Rice	80.1	105.9	173.1	25.8	67.2	32.2	63.5
Rubber	124.9	135.0	113.6	10.1	-21.4	8.1	-15.8
Fish and Other Agricultural Products	62.8	59.8	55.7	-3.0	-4.1	-4.8	-6.9
Others	1,647.6	1,168.1	853.1	-479.5	-315.0	-29.1	-27.0
Total Exports	9,311.0	7,253.5	6,452.6	-2,057.5	-800.9	-22.1	-11.0

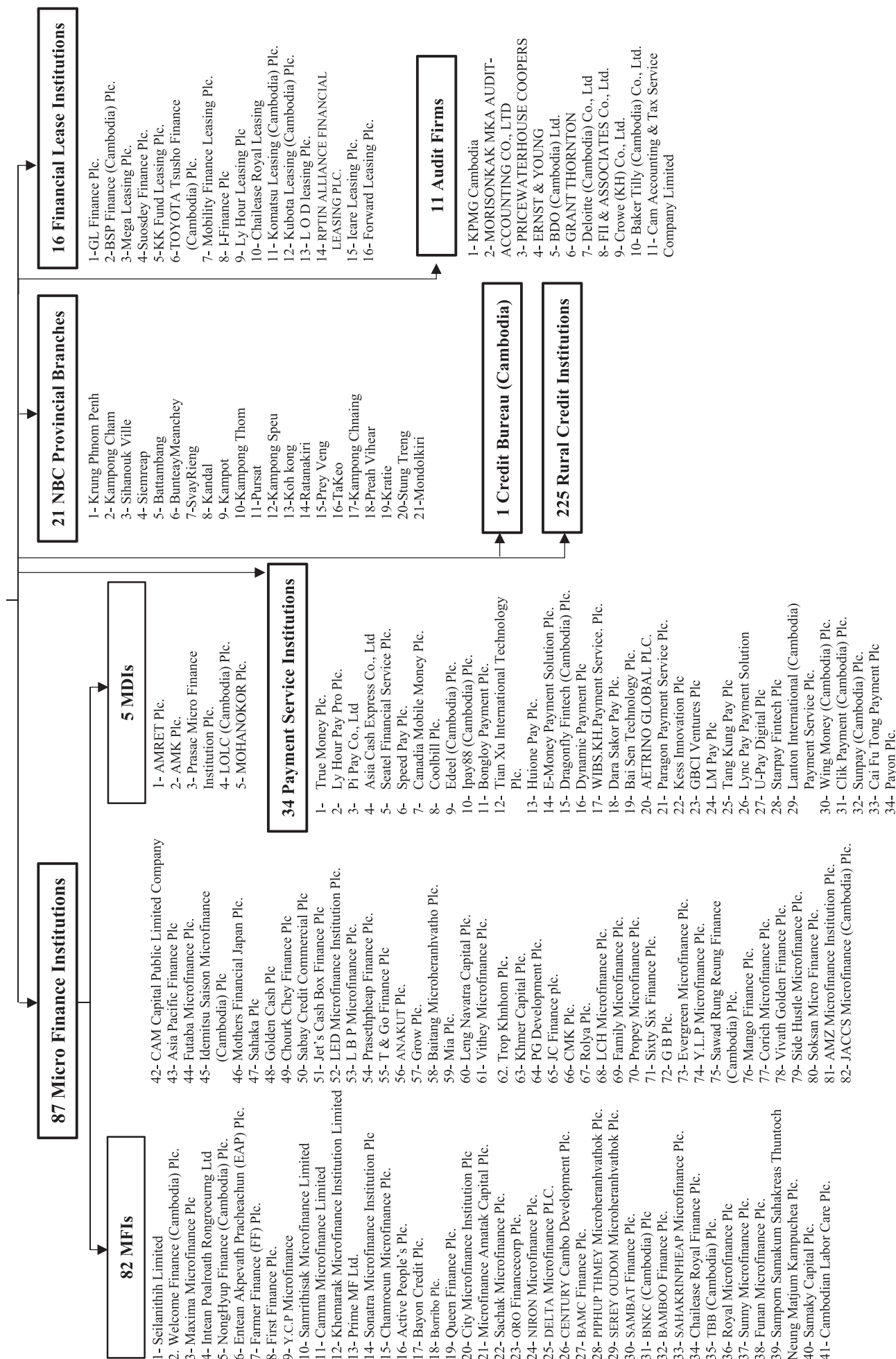
Source: General Department of Cambodia Customs and Excise

* Increased in times, not in percentage (%).

** Revised Data

Table 25: THE BANKING SYSTEM IN CAMBODIA
As of 30 September 2022





អ៊ីនធឺណិត
INTERNET

: www.nbc.org.kh គឺជាគេហទំព័ររបស់ធនាគារជាតិនៃកម្ពុជា ។ ទិន្នន័យថ្មីៗក្នុងគេហទំព័រ និងទិន្នន័យបន្តបន្ទាប់ទៀត ត្រូវបាននិងកំពុងដាក់បញ្ចូលទៅក្នុងប្រព័ន្ធទិន្នន័យ តាមធនធាន ដែលមាន ។ លើសពីនេះទៀត គេហទំព័រនេះ គឺជាទីតាំងដ៏ល្អបំផុតដើម្បីទទួលបានទិន្នន័យសង្ខេប នៃការចេញផ្សាយចុងក្រោយបង្អស់ ។

www.nbc.org.kh is the National Bank of Cambodia website. The website new data and metadata are progressively being added to the database, as resources permit. This website is the best place to start for access to summary data from the latest publications.

សេវាព័ត៌មាន
INFORMATION SERVICE

: បុគ្គលិករបស់នាយកដ្ឋានស្ថិតិ នៃធនាគារជាតិនៃកម្ពុជា អាចជួយចង្អុលបង្ហាញ ឬណែនាំ អ្នកប្រើប្រាស់ក្នុងការស្វែងរកទិន្នន័យតាមតម្រូវការ ។ ការបោះពុម្ពផ្សាយរបស់ធនាគារជាតិនៃកម្ពុជា អាចរកជាប់បាន ហើយសេវាលើការជាប់ប្រចាំក៏អាចរៀបចំបានដែរ ។ ចំពោះសេវាលើទិន្នន័យ ពិសេសផ្សេងទៀតក៏អាចរកបានផងដែរ តាមរយៈការមកជាប់ព្រឹត្តិបត្រដោយផ្ទាល់ ។

The Statistics Department staff of the National Bank of Cambodia can assist users in addressing their data requirements. The National Bank of Cambodia publications are available for sale and subscription services can be arranged. Other special data services are also available, on a user pays basis.

អាសយដ្ឋានទំនាក់ទំនង
CONTACT DETAILS

ធនាគារជាតិនៃកម្ពុជា

NATIONAL BANK OF CAMBODIA

នាយកដ្ឋានស្ថិតិ

Statistics Department

អគារលេខ ៦៩-៧០ មហាវិថីហាណូយ (លេខ១០១៩) ភូមិបាយ៉ាប សង្កាត់ភ្នំពេញថ្មី

ខណ្ឌសែនសុខ រាជធានីភ្នំពេញ

#69-70, Hanoi Blvd. (1019), Phum Bayab, Sangkat Phnom Penh Thmei, Cambodia

អ៊ីម៉ែល : statistics@nbc.org.kh

E-mail : statistics@nbc.org.kh

ទូរស័ព្ទ : (៨៥៥) ២៣ ៧២២ ៥៦៣ – ១១១៥

Telephone: (855) 23 722 563 – 1115

ទូរសារ : (៨៥៥) ២៣ ៤២៦ ១១៧

Facsimile : (855) 23 426 117



ISSN 2074-5680

ផលិតដោយ ធនាគារជាតិនៃកម្ពុជា

Produced by the National Bank of Cambodia